



# CHOCTAW NATION OF OKLAHOMA

## WORKING TO CREATE SYSTEM-WIDE LINKAGES

Kari Hearod, LCSW (Choctaw)  
LT, USPHS Commissioned Corps  
Mahli Issuba (Wind Horse) Family Recovery Center



# SCOPE OF THE ISSUE

- With Latimer and Pittsburg Counties in Choctaw Nation

County	Poverty Level	Child Poverty Level (State average is 21.1%)	Percent of Child Abuse (OK avg. is 13.8% and National is 9.4%)	Child Abuse/Neglect Confirmed Cases Three Year Average	Child Protective Services Confirmed Reports of Child Abuse FY 06
Latimer	22.7%	28.7%	12.0%	34	55
Pittsburg	17.2%	24.5%	26.1%	186	265

- Unfortunately, statistics for 2007 show an increase in confirmed reports of child abuse (414 for FY 07)





# SCOPE OF THE ISSUE

- Billy Stephens, Choctaw Nation Child Welfare Director, states that 85% of children placed in foster care are impacted by parental or caretaker substance abuse.

State of Oklahoma Department of Mental Health and Substance Abuse Services  
Cases Reported of All Agencies for All Substance Abuse

	2000	2001	2002	2003	2004	2005	Total
Latimer County	84	72	70	51	35	19	331
Pittsburgh County	317	284	309	275	297	366	1,848
<b>Total</b>	<b>401</b>	<b>356</b>	<b>379</b>	<b>326</b>	<b>332</b>	<b>385</b>	<b>2,179</b>

Methamphetamine abuse counts for almost 20.0% of these cases.

- 72.1% of cases were 21 to 45 years of age in FY07. These are our Nation's parents.





# SCOPE OF THE ISSUE

- Chi Hullo Li Substance Abuse Treatment Facility for Women and Children served 90 women and children for FY07
- Choctaw Nation Recovery Center served 240 men and women in FY07
- Pittsburg County Drug Court – 109 with 51 being Native American





# SCOPE OF THE ISSUE

- Choctaw Nation Mahli Issuba Recovery Center began accepting referrals in March 2008. The first week we received 36 family referrals.
- Estimated (or known) number of parents referred by child welfare – Around 40% of referrals are coming from Child Welfare
- Estimated (or known) number of parents with a child welfare case - 35 of 36 active clients have had some child welfare involvement present or past





# ENVIRONMENTAL CONTEXT

- The Choctaw Nation covers 11,000 square miles in 10 ½ counties
- Extremely rural and isolated in some areas
- Choctaw and Mainstream Communities Reside Together (19 % Native for counties served.)
- 27% of Choctaw Households live in Poverty
- Children had 4.57 Adverse Childhood Experience Score





# COLLABORATION IS DEVELOPMENTAL

## Information Exchange

- Community Assessments
- Identification of Key Players
- MOU's developed in relationship to information sharing between Oklahoma State Department of Human Services (OKDHS) and Choctaw Nation
- Out-Stationed OKDHS workers at Choctaw Nation Health Centers (cost sharing)
- Identification of Key Community Coalitions and Teams and Placement of Choctaw Nation Representative





# COLLABORATION IS DEVELOPMENTAL

- Identify needs and shared goals
- Identify ways that tribal resources may help meet these needs
- Leverage tribal resources for “seat at the table” in decision making





# PAST COLLABORATIVE EFFORTS

- Past collaborative efforts in serving Tribal community families affected by substance use disorders in the child welfare and the dependency court system include:
  - Choctaw Nation Meth Initiative Committee
  - Multiple Grants from SAMSHA, ACF, and other resources to fund collaborative projects. (CARES, Healthy Marriages, Chi Hullo Li, Natural Highs)
  - Choctaw Nation Mahli Issuba Family Recovery Center





# UNDERLYING VALUES

- Eligibility established through the child, but treatment is family oriented- “Start Where The Family Is” Philosophy
- Goal is Family Healing and Restoration if possible, Permanency for the Child
- Negotiations continue through Regional Partnership Board on identification and resolution of barriers to effective collaboration





# SERVICES PROVIDED

- Individual Counseling and Family Counseling
- Matrix Substance Abuse and Strengthening Families Groups
- Culturally-Based Behavioral Rehab Counseling and Case Management
- “Positive Action” Substance Abuse Prevention and Education





# REGIONAL PARTNERS

- Regional Partners include Oklahoma DHS, Choctaw Nation Child Welfare, Pittsburg and Latimer County Coalitions, Pittsburg County Drug Court, County Schools, Law Enforcement and other Choctaw Nation Programs that impact children and families.
- Goal is development of strategies to respond in an effective and cohesive manner to the needs of families served.





# SCREENING AND ASSESSMENT

- Intake and substance abuse/child safety screening protocols:
  - Work in Progress for identification of screening, brief intervention, referral and assessment tool across health system
  - How did you decide on the team, tool, method, roles and responsibilities? Work continues on research and assessment, work with Co-Occurring Disorders Committee, MOU with Pittsburg County Drug Court





# SCREENING AND ASSESSMENT

- Providing AOD expertise to Child Welfare Workers in investigation/assessment:
  - Planned “Lunch and Learn” Activities on AOD Topics, Incentives for Participation (Door Prizes)
- Ensuring parents seeking treatment receive supports for child safety:
  - “Strengthening Families” Curriculum, Intensive Case Management





# ENGAGEMENT AND RETENTION

## Outreach and engagement strategies:

- Meals provided at Groups
- Incentives such as Wal-Mart Gift Cards and fuel cards for group participation
- Shared Family Meals during “Strengthening Families” groups
- Mahli Issuba Staff works to build understanding of cultural issues and norms between CPS staff and Native American clients.
- “Lunch and Learn” education for CPS, RPG Partners





# ENGAGEMENT AND RETENTION

- Out-stationed staff for substance abuse and/or child safety expertise:
  - Behavioral Health Staff at Choctaw Nation Satellite Health Clinics. Agreement with OKDHS for out-stationed case worker. Choctaw Nation Community Social Work Program brings services to the community.
- Cross-system agreement between substance abuse treatment, child welfare and the courts on responding to clients' progress in treatment and approaches to relapse: We are working on an MOU at this time. We have been utilizing release of information agreements with clients at this time.





# SERVICES TO CHILDREN

- Screening and assessments put in place to identify children of parents with substance use disorders:
  - Parents referred for services are given the Addiction Severity Inventory to determine treatment recommendation
  - Children are screened/assessed for:
    - Children are referred for a physical utilizing our Choctaw Nation Health System.
    - Children, parents, and teachers complete Clinical Assessment of Behavior to assess current functioning and possible issues.
    - Children are referred for further assessment through Choctaw Nation Health System if indicated





# INFORMATION SYSTEMS

- Documenting the prevalence of
  - Substance abuse in child welfare cases
  - Child welfare involvement in parents receiving treatment
  - Effects among children of substance abusers (abuse, neglect, developmental delays)
  - Prenatal substance exposure

*Measures being assessed and documented as part of the intake process and through on-going assessment through the treatment process utilizing a locally created data base and RPG Performance Outcome Measures.*





# JOINT ACCOUNTABILITY AND SHARED OUTCOMES

- Ultimately, the most hoped for outcome is reunification or preservation of the family. Providing the family with the skills and knowledge needed to thrive. If re-unification is not achievable, then placement of the child in loving and stable environment allowing the cycle of substance abuse addiction to be broken.
- All members of the regional collaborative team share accountability for protection of the children and support of the family.





# OUR VISION

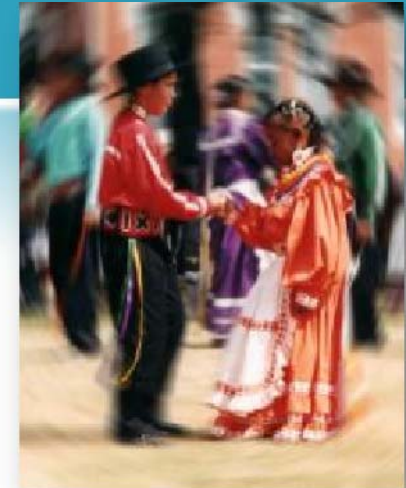
To honor our children and families as  
“Holitopa”.

To be with our families when they are in the  
most and to provide them with the  
support, resources, skills, and hope  
needed to lead happy, healthy, and  
productive lives.





# THE FUTURE OF CHOCTAW NATION



# Mahli Issuba Family Recovery Center

Referral from OKDHS Child Welfare

Referral from Pittsburg County Drug Court

Referral from Choctaw Nation Programs

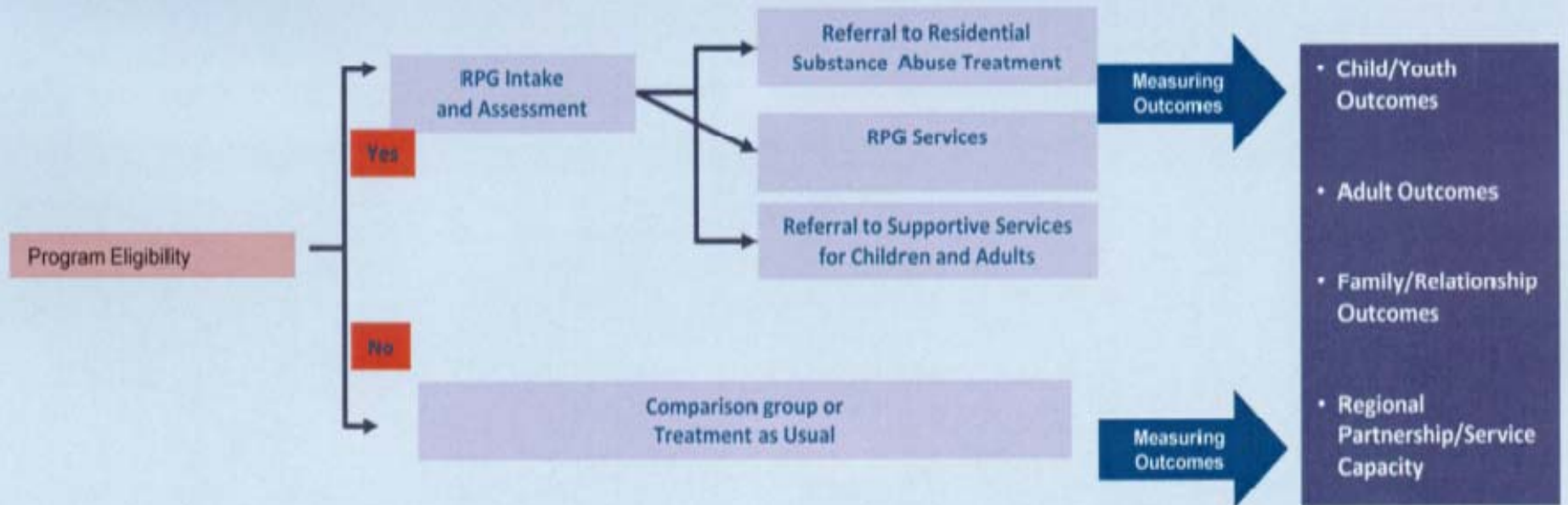
Referral from other Community Resources



Child Welfare Decision Point  
Remains at home  
• Child removed from home



## Mahli Issuba RPG Services





# CHOCTAW NATION OF OKLAHOMA

## WORKING TO CREATE SYSTEM-WIDE LINKAGES

Kari Hearod, LCSW (Choctaw)  
LT, USPHS Commissioned Corps  
Mahli Issuba (Wind Horse) Family Recovery Center