

It's Monday Morning, What Do We Do Now?

Road Maps to New Destinations

Nancy K. Young, Ph.D.
Children and Family Futures
February 2, 2007



4940 Irvine Boulevard, Suite 202
Irvine, CA 92620

714.505.3525
www.cffutures.org

Conference Highlights: What We Heard

It is critical that we:

- Prevent prenatal substance exposure and childhood trauma
- Enhance access to treatment services for parents
- Understand the role of historical trauma in its effects on parents and children
- Address the intergenerational nature of substance abuse and its impact on young girls and mothers

Conference Highlights: What We Heard

It is critical that we:

- Track the changing nature and use of methamphetamine and its impact on families
- Provide comprehensive family-centered treatment and support services
 - To women and their children and families
 - To adolescents and their families
- Implement service delivery models that integrate multiple systems and funding sources

Knowledge Base Exists to Set New Directions

- Screening, brief intervention and engagement needs to happen “upstream”
- Early intervention works
- Family-centered, intergenerational approach is key
- Continuing/intensive recovery support is important
- Using the power of the courts for accountability is effective
- The lessons about what works in collaboration are clear

**So What's Stopping Us From
Getting on Our Way?
...from Acting on our Sense of
Urgency?**



“A Lot of Other Things Going On”

Grant deadlines

Progress reports

Billings and contracts

Staff vacancies

Crisis du jour

Unforeseen emergency

Political pressure

One more “important” meeting

Mechanical Difficulties

Competing time frames - the four clocks

Conflicting values

Staff lack training

No shared outcomes

Who's going to pay?

Confidentiality and no standardized information sharing



The Timing Problems: Waiting for “the Right Time”

- Primary choice of drugs changes over time –
 - The impact of substance use disorders on families has been with us for generations
 - Crises of use patterns generate new problems but also windows of opportunity
 - Alcohol has been and will continue to always be in the picture
 - Our knowledge and awareness of FAS/FASD is growing, but the problem runs deep
 - Reality is polysubstance use is the norm



The Timing Problems: Waiting for “the Right Time”

- It is always the right time for preparation and planning
- It's not getting better on its own
- Some communities have been working on these connections for 15 years now



Be Clear About Where You're Going

Start by asking:

- Who are my clients and what are their needs?
- What services do we currently provide to meet clients' needs? Where do we fall short?
- What about others in the community who also serve our clients?
- How effective are our community's services?
- How many clients are we able to serve?

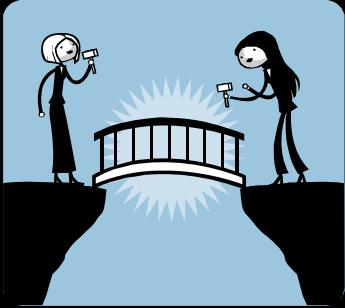


Chart Your Course

“Road Maps” To Help Guide Your Way:

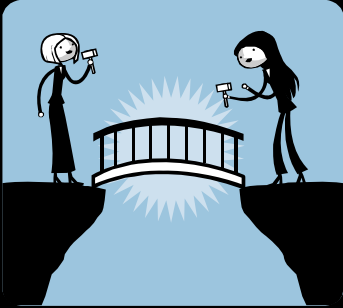
- Self-Assessment Framework: the Ten Elements
- Stages of Collaboration
- Funding Inventory





Which Bridge Do We Take? The Self-Assessment Framework

1. Underlying Values and Principles
2. Daily Practice – Screening and Assessment
3. Daily Practice – Client Engagement and Retention in Care
4. Daily Practice – Services to Children
5. Joint Accountability and Shared Outcomes



The Self-Assessment Framework (continued)

6. Information Sharing and Data Systems
7. Training and Staff Development
8. Budgeting and Program Sustainability
9. Working with Related Agencies
10. Working with the Community and Supporting Families

Are We Ready to Cross that Bridge?

Specific Self-Assessment Tools:

- **Collaborative Capacity Instrument (CCI)**
- **Collaborative Values Inventory (CVI)**
- **Matrix of Collaborative Progress**

Use these tools to decide which bridge is the most important one for your agency to cross first

Are We Organizationally Ready to Go?

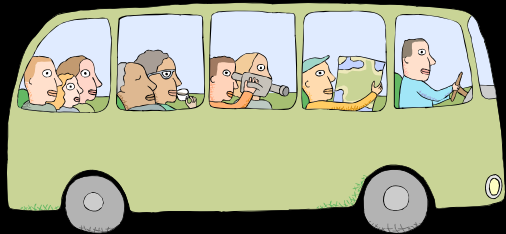
Both formal and informal readiness matter

“Interagency collaborative capacity has an objective and a subjective component: formal agreements, budgets, personnel, accountability, but also *expectations, legitimacy, and trust.*”

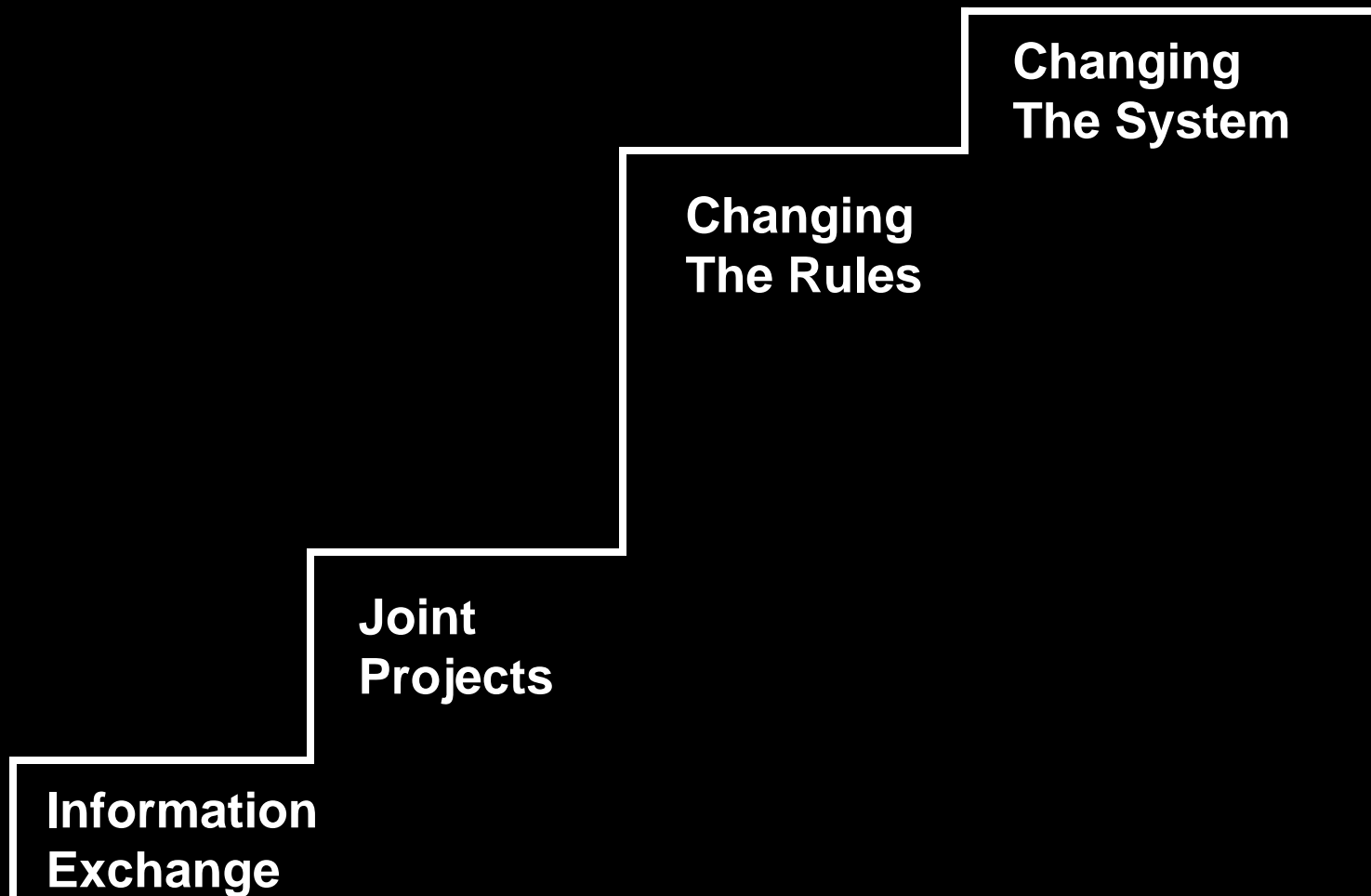
**Eugene Bardach, 1998
*Getting Agencies to Work
Together***

Who Needs to Come with Us on Our Trip?

- What partnerships need to be established?
- What passengers are essential to pick up along the way?
- Whose resources and help do we need to reach our destination?

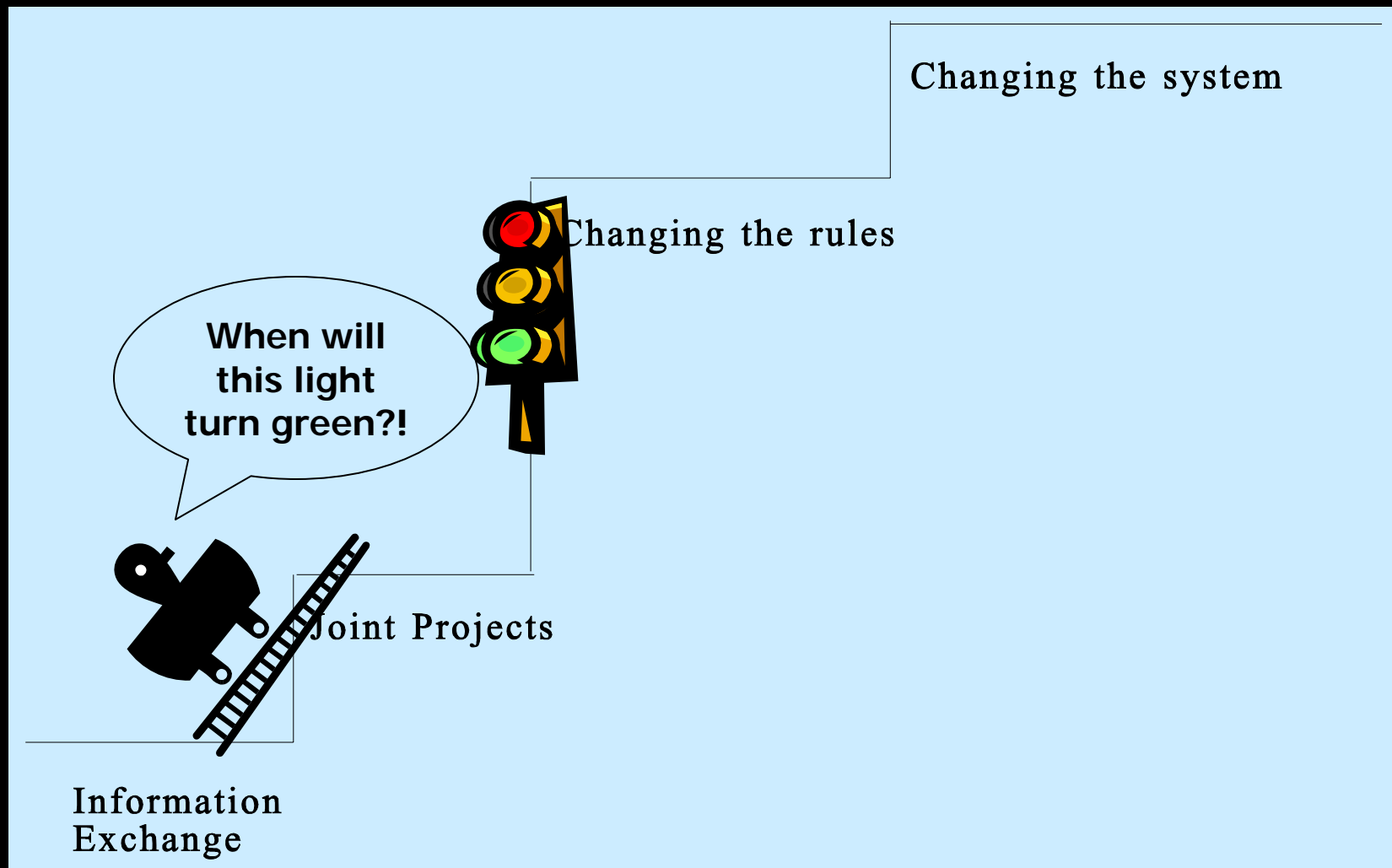


Getting Better at Getting Along: Stages of Collaboration

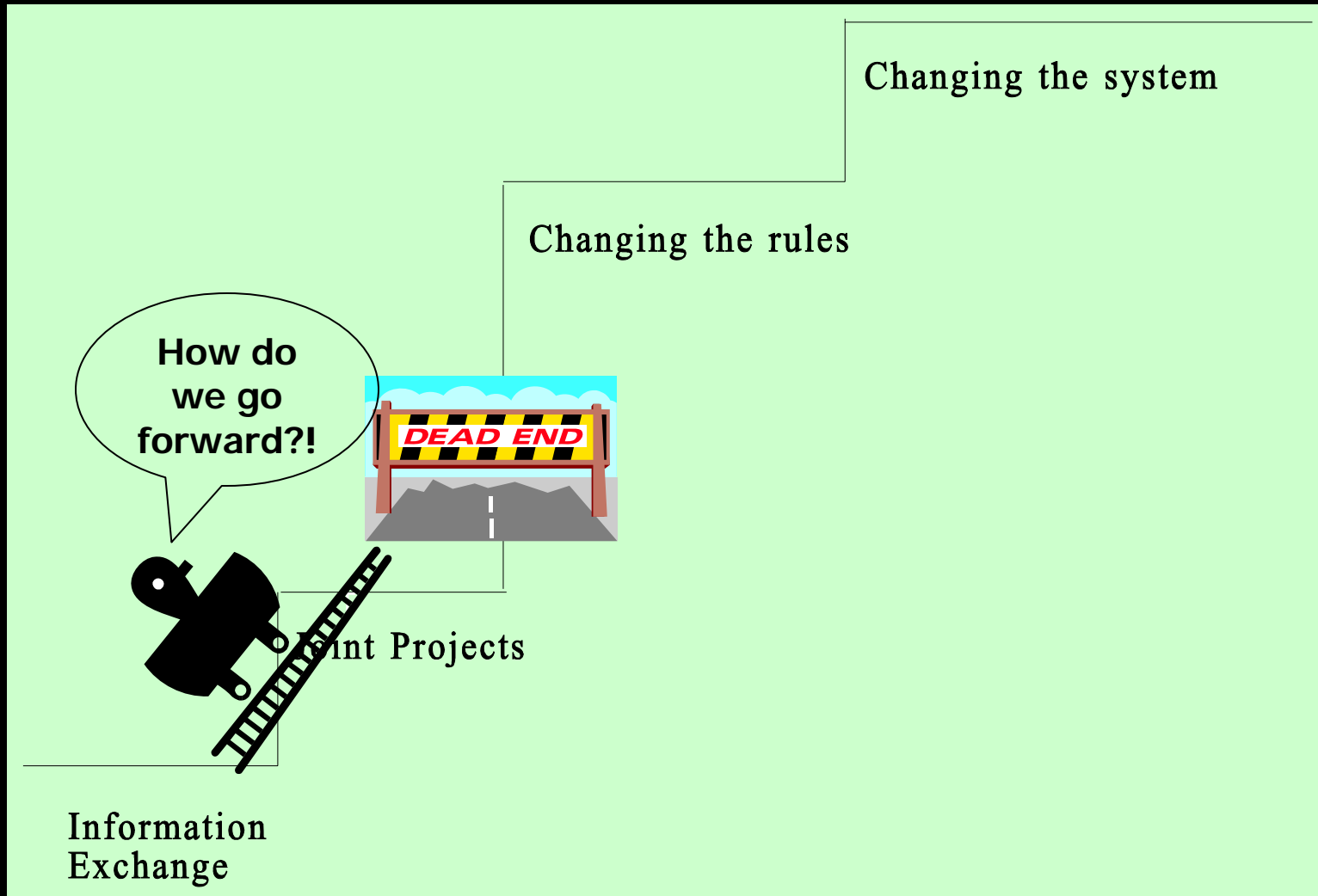


Sid Gardner, 1996
Beyond Collaboration to Results

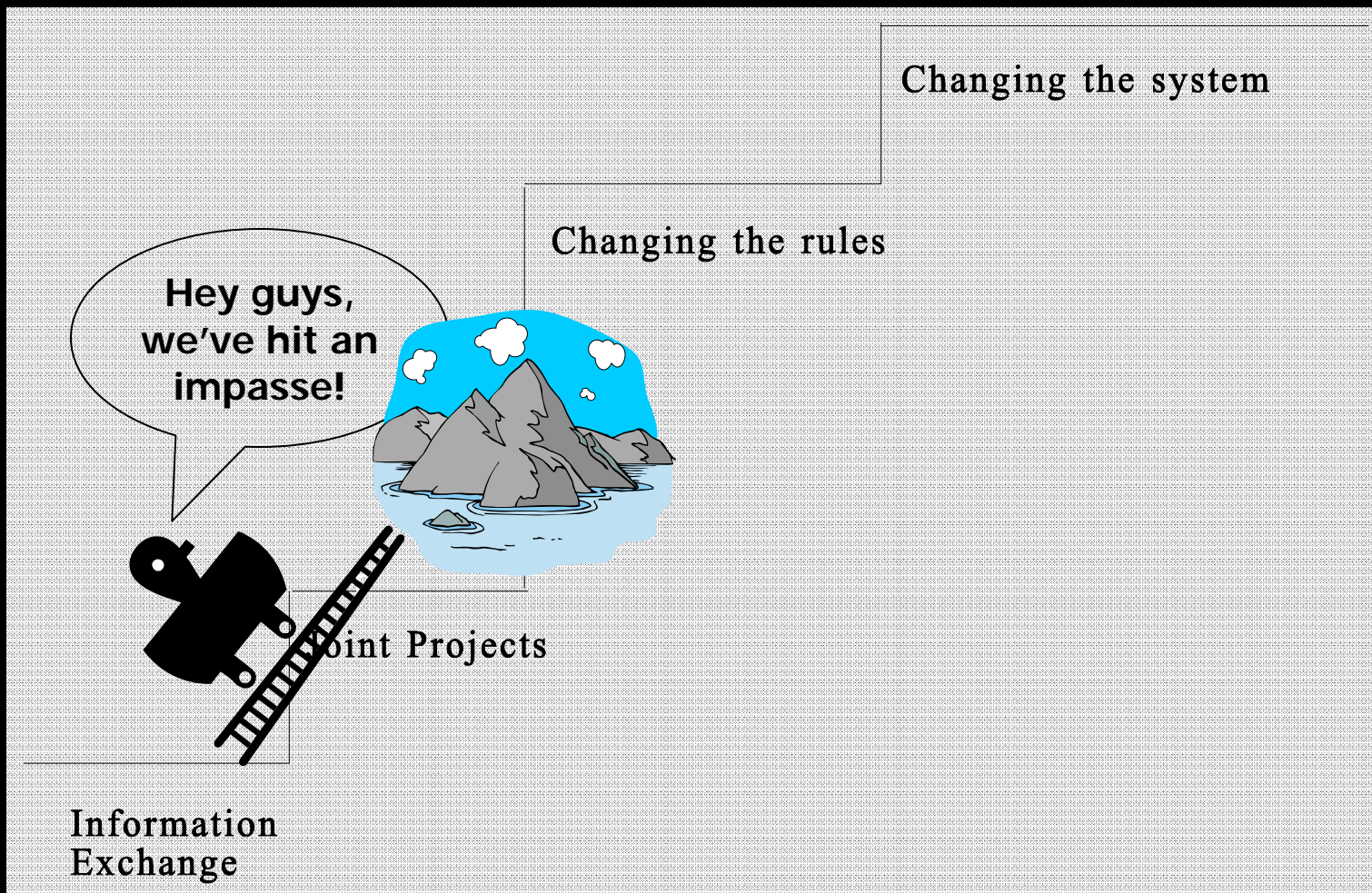
Getting Better at Getting Along: Stages of Collaboration



Getting Better at Getting Along: Stages of Collaboration



Getting Better at Getting Along: Stages of Collaboration



Stop for a Periodic Check Up – Monitor Your Gauges



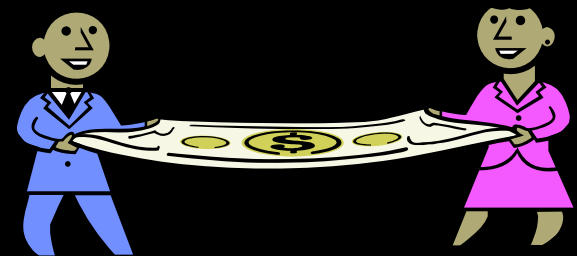
Two types of sustainability:

- Financial
- Political and Community Support



Do We Have Enough Gas?

- What funding and other resources in our community are currently used to fund these services?
- To what extent can we tap into these existing sources?





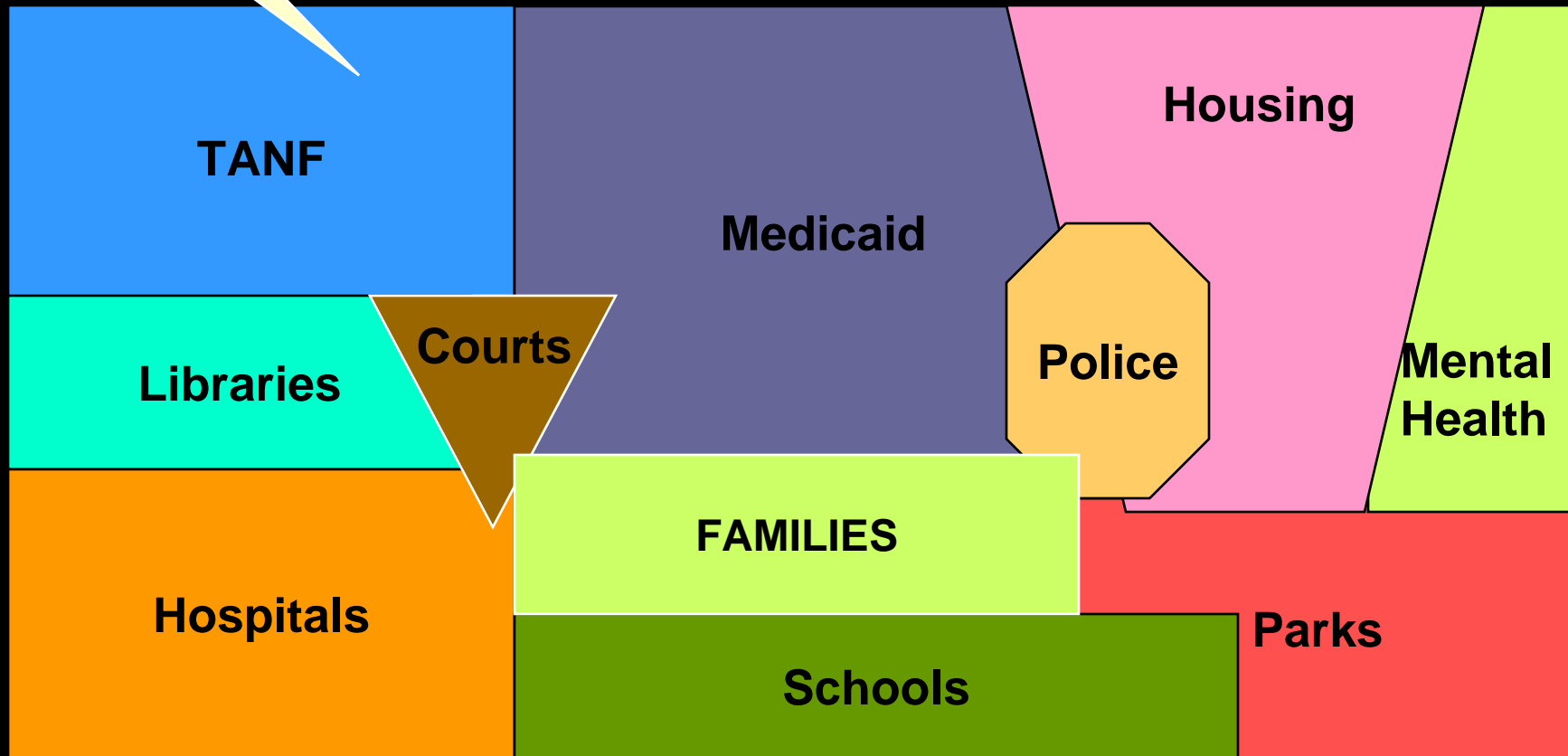
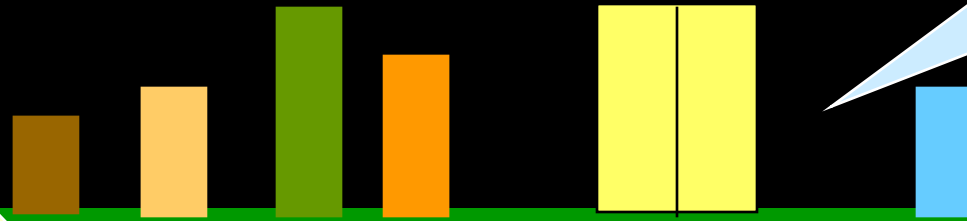
Where Do We Stop to Fill Up? The Funding Inventory

- Maps all sources in the community that fund services
 - At what levels
 - On what types of programs
 - For which populations
- Includes information such as
 - Total funds by Federal, State, and local funding sources
 - Program descriptions, including program objectives, services, and effectiveness
 - Target populations served and client demographics by age, gender, and race/ethnicity
- Helps programs address funding accountability within agencies, communities, and local service providers

Financial Sustainability

The "Real" Money in the Community

Pilots, Demos and Grant-funded Projects



Financial Sustainability

- Know the routes to the money
- Identify ways to maximize resources
- Learn what funders and supporters need to see to know you are effective

Political and Community Support

- Continue to identify needed partners based on changing needs of families
- Negotiate outcomes upfront
- Secure individuals to champion your efforts



Watch for Road Hazards

- Actual route may veer from the map
 - Yahoo disclaimer:

“When using any driving directions or map, it’s a good idea to do a reality check and make sure the road still exists, watch out for construction, and follow all traffic safety precautions. This is only to be used as an aid in planning.”

**END OF
FREEWAY**



Watch for Road Hazards

- Know the difference between paper commitments and real, tangible resources
 - “Empty” MOUs, interagency agreements, protocols
 - Training without policy change to back it up

END OF
FREEWAY

Road Hazards

- Choosing alternate routes or shortcuts that lead you off path

- Lure of chasing new money

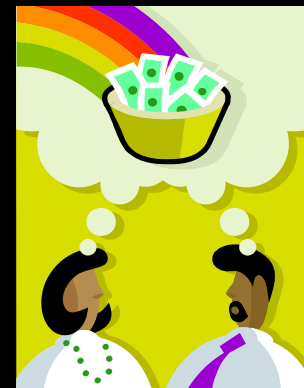
versus

- Making better use of existing sources



Road Hazards

- Detours into the
“Zones of Wishful Thinking”
 - We’re already doing it
 - We could never do it
 - They’ll do it because it’s right



Are We There Yet? How to Know You've Reached Your Destination



So What Do We Do Monday Morning?

The four questions:

1. Where are the data that tells the story?
 - Begin to monitor the population in all three information systems – CWS, ADS, Court
2. Who do we need to succeed?
 - Find one key partner who's not at the table now
3. Where's the real money?
 - Get a redirection agenda
4. Who are the champions?
 - Recruit the policy leaders who will endorse the effort

Available Roadside Assistance

National Center on Substance Abuse and Child Welfare

www.ncsacw.samhsa.gov

Children and Family Futures -- www.cffutures.org

Children's Research Triangle -- www.childstudy.org

Consortium Members

States and Counties with Experience

Most Importantly: Youth and their Families in Recovery