

Table of Contents

Sponsors	2
General Information	3
Conference Overview	4
Pre-Conference Symposium Welcome Letter	5
Pre-Conference Symposium Agenda	6
Conference Agenda	8
Presenter Profiles	22
National Center on Substance Abuse and Child Welfare National Collaborative Leadership Award	35
Exhibitors	36
Continuing Education	41
Hotel Map	48

Conference Sponsors

Children and Family Futures would like to acknowledge the following organizations whose sponsorships have helped make this national conference possible.



U.S. DEPARTMENT OF HEALTH AND HUMAN SERVICES
Substance Abuse and Mental Health Services Administration
Administration for Children and Families
www.samhsa.gov



CHILDREN'S RESEARCH TRIANGLE
The Child Study Center ~ Camp SOAR



National Resource Center for
Child Protective Services



National Association of Social Workers



The Next Stage®

General Information

Registration and Information

The Registration and Information table is located in the Center Lounge at the main entrance to the Grand Ballroom.

Registration and information hours:

Tuesday, January 30	7:00 am – 8:00 pm
Wednesday, January 31	7:00 am – 5:30 pm
Thursday, February 1	7:00 am – 5:00 pm
Friday, February 2	7:00 am – 12:30 pm

Admission to Sessions

Your registration materials include your name badge. This badge provides admission to all conference sessions and meals, so please wear it at all times.

Evaluations

Evaluation forms will be distributed at each plenary and workshop. Please fill out an evaluation for each session you attend at the conference or during the pre-conference symposium. You may hand the evaluation to the monitor or turn it in at the Registration and Information table.

An overall conference and pre-conference symposium evaluation form is included in your registration packet. Please complete and turn it in at the Registration and Information table.

Continuing Education

Participants can earn CEUs, CMEs and CLEs for the conference and pre-conference symposium. To receive a certificate of completion, participants must sign in at the Continuing Education table. Please see page 41 for details.

Exhibits

Exhibits are located in the South Exhibit Hall. A map and description of the exhibitors is included on page 36 of the program. We encourage you to explore the exhibits during breaks, lunch, and before and after sessions.

Exhibitor hours:

Wednesday, January 31, 2007	7:00 am – 5:30 pm
Thursday, February 1, 2007	7:00 am – 5:00 pm
Friday, February 2, 2007	7:00 am – 12:30 pm

Meals and Breaks

Continental breakfast will be served Wednesday and Thursday morning from 7:00 am to 8:30 am in the South Exhibit Hall, and Friday morning from 7:00 am to 8:00 am in the same location. Beverages and snacks will be available during morning and afternoon breaks throughout the conference. The keynote luncheon on Wednesday at noon is included with your conference registration. A list of suggestions for nearby dining is included with your registration materials, or you can pick one up at the Registration and Information table.

Special Needs

The Disneyland Hotel is fully handicapped accessible and able to meet the special needs of guests. For questions about wheelchair accessibility or other special needs, please call the hotel at 714-778-6600 and ask for Guest Services.

12-Step Meetings

Open 12-Step meetings will be held from 6:00 p.m. to 7:00 p.m. on January 31 and February 1 in the Coronado Room. A list of additional local 12-Step meetings is available at the Registration and Information table.

Workshops

The conference features 43 workshops that are presented in five workshop sessions. Please note that there is limited room capacity for the workshops. We encourage you to arrive early! If your selected workshop has reached room capacity, please make another selection.

Conference Overview

Tuesday, January 30: Pre-Conference Symposium

7:00 – 8:00 a.m. Registration and Continental Breakfast

8:00 – 9:30 a.m. Plenary Session – Risk and Promise: The Biological Basis of Behavior in Substance-Exposed Children

9:30 – 9:45 a.m. Break

9:45 a.m. – 12:00 p.m. Workshops – Assessment and Treatment Planning Across the Developmental Spectrum: Trans-Disciplinary Approach to Assessing and Treating the Substance-Exposed Child

12:00 – 1:00 p.m. Lunch on Your Own

1:00 – 2:30 p.m. Breakout Sessions – Treatment that Works: The CDC's Research-Based Treatment Programs for Children with Fetal Alcohol Spectrum Disorders

2:30 – 3:00 p.m. Break

3:00 – 4:30 p.m. Breakout Sessions – Treatment that Works: The The CDC's Research-Based Treatment Programs for Children with Fetal Alcohol Spectrum Disorders (repeated)

4:30 – 5:30 p.m. Closing Session – The Brain, Behavior, Assessment and Treatment: Promoting Optimal Outcomes in Substance-Exposed Children

Wednesday, January 31: Main Conference

7:00 – 8:30 a.m. Registration and Continental Breakfast

8:30 – 8:55 a.m. Welcome and Conference Overview

8:55 – 9:15 a.m. A Family's Perspective

9:15 – 10:15 a.m. Opening Plenary – Substance Abuse in Pregnancy: Recognizing Risk in Mother and Child (Part 1)

10:15 – 10:30 a.m. Break

10:30 a.m. – 11:20 p.m. Opening Plenary – Substance Abuse in Pregnancy: Recognizing Risk in Mother and Child (Part 2)

11:20 a.m. – 12:00 p.m. Plenary Session – Managing Dependency Cases to Minimize the Use of Foster Care

12:00 – 1:30 p.m. Keynote Luncheon

Keynote Presentation – The Role of Race and Culture in Substance Abuse and Child Abuse/Neglect

1:30 – 3:00 p.m. Workshop Session A

3:00 – 3:30 p.m. Break

3:30 – 5:30 p.m. Workshop Session B

Thursday, February 1

7:00 – 8:30 a.m. Registration and Continental Breakfast

8:30 – 9:20 a.m. Welcome and Plenary Session – The Wounded Mother

9:20 – 10:00 a.m. Plenary Session – Responding to Methamphetamine in Child Welfare Practice

10:00 – 10:15 a.m. A Family's Perspective

10:15 – 10:30 a.m. Break

10:30 a.m. – 12:00 p.m. Workshop Session C

12:00 – 1:30 p.m. Lunch on Your Own

1:30 – 3:00 p.m. Workshop Session D

3:00 – 3:30 p.m. Break and Networking Session

3:30 – 5:00 p.m. Workshop Session E

5:30 – 6:30 p.m. *The Listening Heart* Video Screening

Friday, February 2

7:00 – 8:00 a.m. Registration and Continental Breakfast

8:00 – 8:45 a.m. Plenary Session – The National Center on Substance Abuse and Child Welfare Consortium and the National Collaborative Leadership Award

8:45 – 9:15 a.m. Plenary Session – Family Centered Treatment for Parents with Substance Use Disorders

9:15 – 10:15 a.m. Plenary Session – Adolescents and Family Treatment

10:15 – 10:45 a.m. Break

10:45 – 11:30 a.m. Plenary Session – Family Centered Treatment: The Exodus Program

11:30 – 11:45 a.m. A Family's Perspective

11:45 – 12:30 p.m. Closing Keynote – It's Monday Morning: What Do We Do Now?



January 30, 2007

Dear Colleagues:

Over the last 30 years, we have seen tremendous change and growth in our understanding of children who have been prenatally exposed to alcohol, tobacco, and illicit drugs. The latest scientific advances in technology have allowed us to study the relationship between functional and structural changes in the developing fetal brain and long term outcome of the child. Now, we are moving into new frontiers as we use this information to develop research-based interventions for children affected by prenatal exposure.

Unfortunately, what has not changed over the past three decades is the complexity of the lives these children lead. These biologically vulnerable children frequently end up in a child welfare system that is challenged to meet all their needs. The environmental factors that then come into play if the child moves between caregivers may cause further damage and dampen expectations for long term outcome.

The pre-conference symposium, *Behavior and the Brain: Prevention and Intervention for Children Across the Developmental Stages*, seeks to create change in the way we all look at and work with these children. We will examine biological and environmental influences on child behavior and development and, most importantly, focus on innovative treatment strategies that have been developed through extensive clinical research. We are especially indebted to the National Center on Birth Defects and Developmental Disabilities, Centers for Disease Control and Prevention, for its support of the five national grantee sites that are conducting this treatment research and making it possible for the five sites to share information with you today.

These are exciting times, and we welcome you as we come together to learn from one another and create new possibilities for the special children and families we all serve.

Sincerely yours,

Ira J. Chasnoff, M.D.
President

180 N. Michigan Avenue, Suite 700
Chicago, IL 60601

Phone: (312) 726-4011
Fax: (312) 726-4021
www.childstudy.org

Tuesday January 30

7:00 a.m. – 8:00 p.m. Registration – Center Lounge

7:00 – 8:00 a.m. Continental Breakfast –
Center Lounge

8:00 – 9:30 a.m. Plenary Session – Risk and Promise:
The Biological Basis of Behavior in Substance-Exposed
Children – Center Ballroom
Ira J. Chasnoff, M.D., President, Children's Research Triangle

9:30 – 9:45 a.m. Break, Center Lounge

9:45 a.m. – 12:00 p.m. Workshops – Assessment and
Treatment Planning Across the Developmental Spectrum:
Trans-disciplinary Approach to Assessing and Treating the
Substance-Exposed Child

Workshop A – Infant Mental Health: Maximizing the
Potential of Prenatally-Exposed Infants and Toddlers
through Early Intervention– North Ballroom A

Presenters:

Cheryl Pratt, Ph.D.
Linda D. Schwartz, Ph.D.
Wendy Neuberger, M.D.
Children's Research Triangle

Workshop B – The School-Aged Child: Assessment
and Treatment Planning Across the Home/School
Continuum– North Ballroom B

Presenters:

Greg Bailey, Ph.D.
Amy Groessl, L.C.S.W.
Erin Telford, Psy.D.
Wendy Neuberger, M.D.
Children's Research Triangle

Workshop C – Adolescents with Prenatal Substance
Exposure: Assessment, Treatment Planning and
Preparation for Transition Out of the Child Welfare
System – South Ballroom A

Presenters:

Christine Schmidt, Psy.D.
Vicki Pendleton, Psy.D.
Children's Research Triangle

12:00 – 1:00 p.m. Lunch on Your Own. Suggestions for
nearby dining are available at the registration table.

1:00 – 2:30 p.m. Breakout Sessions – Treatment that
Works: The CDC's Research-Based Treatment Programs
for Children with Fetal Alcohol Spectrum Disorders (FASD)
(Sessions will be repeated so participants can attend
presentations from two of the five sites)

Atlanta – Improving Behavior and Academic
Functioning in FASD: Caregiver Education and
Intervention with Children – North Ballroom A

Presenters:

Claire D. Coles, Ph.D.
Julie A. Kable, Ph.D.
Fetal Alcohol Center, Marcus Institute,
A Division of the Kennedy-Krieger Institute
Emory University School of Medicine

Chicago – Optimizing Children's Self-Regulation: A
Group Therapy Approach to Neurocognitive Habilitation
for Foster and Adopted Children with Fetal Alcohol
Syndrome/Alcohol-Related Neurodevelopmental
Disorder – North Ballroom B

Presenters:

Ira J. Chasnoff, M.D.
Christine Schmidt, Psy.D.
Lindsay Bailey, M.S.
Anne Wells, Ph.D.
Greg Bailey, Ph.D.
Children's Research Triangle

Los Angeles – Project Bruin Buddies: A Social Skills
Training Model for Children with Fetal Alcohol
Spectrum Disorders (FASD) – South Ballroom A

Presenters:

Mary J. O'Connor, Ph.D.
Blair Paley, Ph.D.
Elizabeth Laugeson, Ph.D.
Department of Psychiatry and Biobehavioral Sciences
Semel Institute, David Geffen School of Medicine at
UCLA

Oklahoma City – Parent-Child Interaction Therapy:
Applications to 2 – 7 Year Old Children with Prenatal
Substance Exposure – South Ballroom B

Presenters:

Robin H. Gurwitch, Ph.D.
University of Oklahoma Health Sciences Center



Seattle – Meeting the Challenge of Intervention: The "Families Moving Forward" Home Visiting Model for Caregivers Raising Children with FASD – Center Ballroom

Presenters:

Heather Carmichael Olson, Ph.D.
 Jessica Rieken
 Department of Psychiatry and Behavioral Sciences
 University of Washington School of Medicine,
 Children's Hospital Child Psychiatry Outpatient Clinic

2:30 – 3:00 p.m. Break – Center Lounge

3:00 – 4:30 p.m. Breakout Sessions – Treatment that Works: The CDC's Research-Based Treatment Programs for Children with Fetal Alcohol Spectrum Disorders (repeated)

Atlanta – Improving Behavior and Academic Functioning in FASD: Caregiver Education and Intervention with Children – North Ballroom A

Chicago – Optimizing Children's Self-Regulation: A Group Therapy Approach to Neurocognitive Habilitation for Foster and Adopted Children with FAS/ARND – North Ballroom B

Los Angeles – Project Bruin Buddies: A Social Skills Training Model for Children with Fetal Alcohol Spectrum Disorders (FASD) – South Ballroom A

Oklahoma City – Parent-Child Interaction Therapy: Applications to 2 – 7 Year Old Children with Prenatal Substance Exposure – South Ballroom B

Seattle – Meeting the Challenge of Intervention: The Families Moving Forward Home Visiting Model for Children with FASD – Center Ballroom

4:30 – 5:30 p.m. Closing Session – The Brain, Behavior, Assessment and Treatment: Promoting Optimal Outcomes in Substance-Exposed Children – Center Ballroom

Facilitator:

Jacqueline Bertrand, Ph.D., Moderator
 Centers for Disease Control and Prevention
 U.S. Department of Health and Human Services

Panelists:

Claire Coles, Ph.D.
 Ira J. Chasnoff, M.D.
 Mary J. O'Connor, Ph.D.
 Robin Gurwitch, Ph.D.
 Heather Carmichael Olson, Ph.D.

5:30 p.m. Closing Session Adjourns

In Remembrance



Joe Anna Sullivan

It is with great sadness that we remember our friend and colleague Joe Anna Sullivan, who passed away suddenly on January 12, 2007.

Joe Anna was passionate about improving conditions for children and families, and she was truly "tri-lingual" in her understanding of the substance abuse treatment, child welfare, and family court systems that collaborate to achieve these improvements. She was a state policy maker and administrator in both the child welfare and substance abuse fields, and she had an exceptional talent in navigating the political landscape of policy situations.

Over the course of her career, she was the executive director of a community-based substance abuse prevention and treatment program; Cook County regional manager of the Illinois Department of Alcoholism and Substance Abuse; and deputy director of the Illinois Department of Children and Family Services, where she led the effort to create the largest substance abuse Title IV-E Waiver Demonstration in the nation, ensuring that parents with substance use disorders in Cook County received timely access to care. We're honored to offer a workshop at this conference, "Substance Abuse Title IV-E Waiver Demonstrations: Evaluation Outcomes and Lessons Learned," that presents the results from Joe Anna's early efforts in this arena.

It was the good fortune of Children and Family Futures that a change of administrations in Illinois allowed Joe Anna to join us in developing the National Center on Substance Abuse and Child Welfare. Joe Anna spearheaded our efforts to provide the program of In-Depth Technical Assistance to states, and she loved working directly with the states of Florida, Arkansas, and Texas. Her skill and dedication in supporting the state teams is acknowledged by all who worked under her guidance.

In her most recent position as Chief Executive Officer of the Illinois Alcoholism and Drug Dependence Association, she used her outstanding leadership and advocacy skills to strengthen the service system in Illinois.

The children and families of Illinois and of our nation have benefited greatly from Joe Anna's passion and dedication. Her accomplishments are an inspiration to those who continue in this crucially important work.

Wednesday January 31

7:00 a.m. – 5:30 p.m. Registration – Center Lounge

7:00 – 5:30 p.m. Exhibits Hall Open – South Exhibit Hall

7:00 – 8:30 a.m. Continental Breakfast – South Exhibit Hall

8:30 – 8:40 a.m. Guardian Scholar Welcome – Grand Ballroom

Jessica Greer, Guardian Scholar

Guardian Scholars participate in a comprehensive program of financial aid, life coaching, mentoring, housing and individualized attention that enable emancipated foster youth to successfully complete higher education. Guardian Scholars are sponsored by the Orangewood Children's Foundation, Santa Ana, CA.

8:40 – 8:55 a.m. Conference Overview and Introductions – Grand Ballroom

Michael Riley, Ph.D., Director, Children and Family Services, Orange County Social Services Agency

Dr. Riley will provide a brief overview of the conference and introduce the morning speakers.

8:55 – 9:15 a.m. A Family's Perspective – Grand Ballroom

Lisa Carmel and Tim Workman

Ms. Carmel and Mr. Workman are active in Orange County's Parents Taking Action (PTA). Established in 2005, PTA is a group of parents who have successfully reunified with their children. Their mission is to help other families achieve reunification in a timely manner by sharing experience, providing support and encouragement, and utilizing community resources. Ms. Carmel is the chairperson of the group.

9:15 – 10:15 a.m. Opening Plenary, Part 1 – Substance Abuse in Pregnancy: Recognizing Risk in Mother and Child – Grand Ballroom



Dr. Chasnoff

Ira J. Chasnoff, M.D., President, Children's Research Triangle and Bruce Duncan Perry, M.D., Ph.D., Senior Fellow, The ChildTrauma Academy

Prenatal exposure to alcohol and other drugs can produce functional and structural changes in the developing fetal brain. These changes are at the heart of the neurodevelopmental and behavioral difficulties often documented in substance exposed children. These biologically fragile children are often then placed in a child welfare system that is challenged to meet their specific needs, placing the children at even greater risk. This plenary session (Part 1 and Part 2) will explore the link between substance abuse in the family and placement in the child welfare system, and will specifically address the interactive and additive impact of prenatal exposure and out-of-home placement on early childhood neurobehavior and social/emotional development.



Dr. Perry

10:15 – 10:30 a.m. Break – South Exhibit Hall

10:30 – 11:20 a.m. Opening Plenary, Part 2 – Substance Abuse in Pregnancy: Recognizing Risk in Mother and Child – Grand Ballroom

Ira J. Chasnoff, M.D., President, Children's Research Triangle and Bruce Duncan Perry, M.D., Ph.D., Senior Fellow, The ChildTrauma Academy

See description for Part 1, above.

11:20 a.m. – 12:00 p.m. Plenary Session – Managing Dependency Cases to Minimize the Use of Foster Care – Grand Ballroom



The Honorable James R. Milliken, J.D., Judge of the Superior Court, Retired

Good management techniques on the part of juvenile courts and child protection agencies can minimize children's stays in foster care and improve outcomes for children. Judge

Milliken will discuss his experience in establishing the nation's first county-wide family treatment court to address parental substance use disorders. He will highlight how parental sobriety can reduce stays in foster care for children and enhance adoption statistics.

12:00 – 1:15 p.m. Keynote Luncheon – Grand Ballroom

12:30 – 1:15 p.m. Keynote Presentation The Role of Race and Culture in Substance Abuse and Child Abuse/Neglect – Grand Ballroom



Kathy Sanders-Phillips, Ph.D., Distinguished Research Scientist, Center for Drug Abuse Research, Howard University

Dr. Sanders-Phillips will present a model for understanding drug abuse among girls and women of color. Traditional approaches

too often do not account for the unique experiences of girls and women of color and their responses to structural violence. Expanding cultural competence in research, service and policy will be highlighted.

1:30 – 3:00 p.m. Workshop Session A

See pages 9-11 for workshop descriptions, presenters and room locations.

3:00 – 3:30 p.m. Break – South Exhibit Hall

3:30 – 5:30 p.m. Workshop Session B See pages 11-13 for workshop descriptions, presenters and room locations.



Wednesday, January 31 Workshop Sessions – A 1:30 – 3:00 p.m.

Workshop Title	Room
A-1 School Solutions: Strategies for Success in the Classroom for Substance-Exposed Children	Coronado Room
A-2 Parent Child Interaction Therapy: An Effective Treatment for Children and Families with Substance Use Disorders	Avalon Room
A-3 Pre-Filing Family Preservation Court: An Innovative Approach to Keep Families Together	Marina Ballroom 1
A-4 It's All About the Data: Interface of Evaluation, Program Development and Partnership to Address Substance Abuse and Reduce Child Abuse and Neglect	Marina Ballroom 2
A-5 Safety, Sobriety and Family Strengths: Helping Mothers and Children Recover Together	North Exhibit Hall G-H
A-6 Assessing Child Safety and Protective Capacities in Substance Abuse/CPS cases	Marina Ballroom 4
A-7 Using Motivational Interviewing Tools to Assist in the Process of Readiness for Change Among Substance Abusing Mothers in the Child Welfare System	North Exhibit Hall B-C
A-8 Children of Chaos: Identifying and Assisting Young Children Living in Substance-Abusing Homes	North Exhibit Hall D-E
A-9 Linking Substance Abuse and Child Trauma Issues: A Conversation	Marina Ballroom 3

Wednesday, January 31

Workshop Sessions – A 1:30 – 3:00 p.m.

A-1 School Solutions: Strategies for Success in the Classroom for Substance-Exposed Children

Location: Coronado Room

Description: This workshop will discuss the common difficulties substance-exposed children exhibit in the classroom, including cognitive deficits and behavioral problems. Practical strategies and techniques for managing these difficulties will also be presented.

Presenters:

Gregory Bailey, Ph.D.
Children's Research Triangle
Chicago, IL

Christine Schmidt, Psy.D.
Children's Research Triangle
Chicago, IL

A-2 Parent Child Interaction Therapy (PCIT): An Effective Treatment for Children and Families with Substance Use Disorders

Location: Avalon Room

Description: Parent-Child Interaction Therapy (PCIT) is a family-centered treatment approach proven effective for abused and at-risk children and their caregivers, including biological and foster parents. PCIT has been successfully adapted for use with children who have experienced child maltreatment in families with substance use disorders, and with children who have been prenatally exposed to substances. PCIT is also recognized as a way to help

support foster parents caring for children with behavioral problems by enhancing the relationship between foster parents and foster children and teaching foster parents behavioral management skills. Presenters will address research indicating that PCIT has the following benefits: reductions in risk of child abuse, improvements in parenting skills and attitudes, improvements in child behavior, and benefits for parents and other caregivers.

Presenters:

Robin H. Gurwitch, Ph.D.
Department of Pediatrics, University of Oklahoma
Health Science Center
Oklahoma City, OK

Kim Helfgott, M.A.
Child Welfare Information Gateway
Fairfax, VA

A-3 Pre-Filing Family Preservation Court: An Innovative Approach to Keep Families Together

Location: Marina Ballroom 1

Description: This workshop is specifically designed for agencies working with children and families in crisis due to substance abuse. The presenters will emphasize the importance of treating the whole family prior to the removal of children from the home, and discuss the legal basis for implementing a pre-filing Family Preservation Court. The premise of the program is to provide one year of intensified treatment, case management, parenting, life skills, and family services, prior to the filing of a petition, to enable parents to access and maintain critical resources such as HUD housing, Medicaid, and Temporary Assistance for Needy Families. Implications of the Family Preservation

Court and its impact on the county System Improvement Plan, particularly the immediate cost savings for the county, Court and State, will also be highlighted.

Presenters:

Pamela Miller
Superior Court of California, County of Riverside
Murrieta, CA

Rob Nagby
Superior Court of California, County of Riverside
Murrieta, CA

Phil Breitenbucher, M.S.W.
Riverside Department of Public Social Services
Murrieta, CA

Tim S. Smith
Mental Health Systems, Inc.
San Diego, CA

A-4 It's All About the Data: Interface of Evaluation, Program Development and Partnership to Address Substance Abuse and Reduce Child Abuse and Neglect

Location: Marina Ballroom 2

Description: This workshop describes how evaluation was integrated into a comprehensive child abuse prevention and intervention program. The presenters will discuss how evaluation has informed lessons learned from an enhanced focus on neighborhood-based substance abuse services to reduce risk of child abuse and neglect, and how partnerships between public/private organizations can be instrumental in developing a continuum of services to improve outcomes for children and families in the child welfare system. Challenges associated with public-private partnerships (e.g., cultural differences, funding, problem solving, accountability and communication) and solutions will also be discussed.

Presenters:

Michele McGibbon
LPC Consulting Associates, Inc.
Sacramento, CA

Patrick Mangan, M.S.W.
Birth & Beyond, Department of Health and Human Services, Sacramento County
Sacramento, CA

A-5 Safety, Sobriety and Family Strengths: Helping Mothers and Children Recover Together

Location: North Exhibit Hall G-H

Description: This workshop will present a unique program model, Services for Substance-Abusing Battered Women and Their Children. The presenters will explore how services which concurrently address substance abuse, domestic violence, and trauma, as well as mental health needs of mothers, are vital in their efforts to partner with families to support their safety, recovery, and parenting. The presenters will share the knowledge gained through a collaborative program development process that integrates diverse viewpoints and services to meet the complex needs of these families.

Presenters:

Emily Davern, M.S.W., L.I.C.S.W.
Massachusetts Department of Social Services
Boston, MA

Deborah Bertges, M.A., L.M.H.C., L.A.D.C. 1
Private Practice
Newburyport, MA

A-6 Assessing Child Safety and Protective Capacities in Substance Abuse/CPS cases

Location: Marina Ballroom 4

Description: This workshop will explore child safety decision making with families affected by parental substance use disorders. Leaving a child in the home or immediate removal is a daily decision that can be complicated by the effects of parents' substance use. Critical safety concepts that must be applied will be reviewed and a method of analyzing substance abuse related family situations and their protective capabilities will be discussed. Participants will be given a substance abuse/child maltreatment case scenario to learn safety management skills.

Presenter:

Theresa E. Costello, M.A.
National Resource Center for Child Protective Services
Albuquerque, New Mexico

A-7 Using Motivational Interviewing Tools to Assist in the Process of Readiness for Change Among Substance Abusing Mothers in the Child Welfare System

Location: North Exhibit Hall B-C

Description: This presentation will explore the motivational change process for substance-abusing women in the child welfare system within an international border region. The presenter will discuss concepts of motivational change and provide knowledge and skills to assist practitioners in working with substance-affected mothers and their families.

Presenter:

Pat Sandau-Beckler, Ph.D.
New Mexico State University
Las Cruces, NM



A-8 Children of Chaos: Identifying and Assisting Young Children Living in Substance-Abusing Families

Location: North Exhibit Hall D-E

Description: The chaos in substance-abusing families can result in mental health, developmental and behavioral problems in children. This workshop will examine an early intervention and treatment model using multiple agencies and school systems to help children heal and enable caretakers to provide a safer living environment. The presenter will describe how to use research-based assessment tools with an outcome-based intervention program for substance-abusing families.

Presenter:

David D. Love, M.F.T.
Valley Community Counseling Services
Stockton, CA

A-9 Linking Substance Abuse and Child Trauma Issues: A Conversation

Location: Marina Ballroom 3

Description: This workshop will be an open discussion of the interaction of prenatal substance exposure, life in a home complicated by substance abuse, and out of home placement on early childhood neurobehavior and social/emotional development. Rather than presenting a formal lecture, Dr. Chasnoff and Dr. Perry will have a conversation with the workshop participants, answering questions and expanding on one another's research and theory that form the basis of their respective but complimentary work.

Presenters:

Ira J. Chasnoff, M.D.
Children's Research Triangle
Chicago, IL

Bruce Duncan Perry, M.D., Ph.D.
The ChildTrauma Academy
Houston, TX

Wednesday, January 31

Workshop Sessions – B 3:30 – 5:30 p.m.

B-1 “It’s OK. I’m Fine.” Lessons Learned by Young Children who Experience Effective Infant Mental Health Interventions

Location: Coronado

Description: “It’s ok, I’m fine,” was spoken by Joey, age three, after experiencing his first successful independent transition during dyadic intervention groups. Effective Infant Mental Health intervention strategies for prenatally substance-exposed children from birth through five years of age will be presented. These include interventions supporting the development of self-regulation and positive parent-child relationships.

Presenters:

Cheryl Pratt, Ph.D.
Children's Research Triangle
Chicago, IL

Linda Schwartz, Ph.D.
Children's Research Triangle
Chicago, IL

Wednesday, January 31 Workshop Sessions – B 3:30 – 5:30 p.m.

Workshop Title	Room
B-1 “It’s OK. I’m Fine.” Lessons Learned by Young Children who Experience Effective Infant Mental Health Interventions	Coronado
B-2 Motivational Interviewing in the Prenatal Clinic	Avalon
B-3 Lessons from the 4P's Plus	Marina Ballroom 1
B-4 NCSACW’s Program of In-Depth Technical Assistance and Minnesota’s Story: Achieving Collaborative Outcomes for Working with Families	Marina Ballroom 4
B-5 Community Approaches to Prevention and Early Intervention	Marina Ballroom 3
B-6 How to Effectively Serve Families at the Front End of CPS who Struggle with Substance Use Disorders: Four Models and Program Elements that Lead to Success	Marina Ballroom 2
B-7 Celebrating Families! An Innovative Approach for Working With Substance Abusing Families	North Exhibit Hall B-C
B-8 Substance Abuse Title IV-E Waiver Demonstrations - Evaluation Outcomes and Lessons Learned	North Exhibit Hall D-E



B-2 Motivational Interviewing in the Prenatal Clinic

Location: Avalon

Description: Motivational Interviewing has become an established skill in leading people toward health enhancing behavior change. In this unique application, Motivational Interviewing is used in combination with the 4P's Plus screening device and the "I am Concerned ..." brief intervention. The prenatal care provider who is equipped with these tools and the communication skill of Motivational Interviewing is able to selectively respond to pregnant substance-using women with due regard for their treatment readiness. Participants will learn how to use Motivational Interviewing to sustain a conversation about substance use, including how to deal with ambivalence/resistance to changing substance use during pregnancy.

Presenter:

Rich McGourty, Ph.D.
Children's Research Triangle, National Training Institute
Chicago, IL

B-3 Lessons from the 4P's Plus

Location: Marina Ballroom 1

Description: This workshop will explore and review the empirical findings from the 4P's Plus. Information about family history of substance use, the different patterns of use among women of various races and ages, and the co-occurrence of depression and violence in women who use substances will be the focus of the presentation. Participants will learn how to apply information about family history of substance use to their intervention plans and programs.

Presenters:

Anne M. Wells, Ph.D.
Children's Research Triangle
Chicago, IL

Ira Chasnoff, M.D.
Children's Research Triangle
Chicago, IL

B-4 NCSACW's Program of In-Depth Technical Assistance and Minnesota's Story: Achieving Collaborative Outcomes for Working with Families

Location: Marina Ballroom 4

Description: This workshop will introduce the program of In-Depth Technical Assistance offered by the National Center on Substance Abuse and Child Welfare to help States and Tribes develop multi-system partnerships, and showcase Minnesota's impressive results. The workshop uses Minnesota's experience to highlight what can be accomplished through collaborative planning among multiple systems to improve outcomes for children and families. The presenters will use interactive tools to share lessons learned, challenges, and successes, as well as the project's products, which include an interactive best practices tool kit, a parent partner handbook, and a statewide training plan.

Presenters:

Deborah Moses, M.P.H.
Minnesota Department of Human Services,
Chemical Health Division
Saint Paul, MN

Jackie Crow Shoe
Child Safety and Permanency, Minnesota Department
of Human Services
Saint Paul, MN

Kari Earle, M.Ed., L.A.D.C.
National Center on Substance Abuse and Child Welfare
Irvine, CA

B-5 Community Approaches to Prevention and Early Intervention

Location: Marina Ballroom 3

Description: This workshop will address community-based approaches of prevention and early intervention for substance abuse in pregnant women. The presenters will discuss the scope of the substance abuse problem, community collaboration, funding strategies and the implementation of a SART (Screening, Assessment, Referral and Treatment) program. Health, developmental and neurobehavioral problems found in children who have been prenatally exposed to alcohol and/or other illicit drugs will also be highlighted.

Presenters:

Jan Campbell, R.N., B.S.N.
San Luis Obispo County Health Department
San Luis Obispo, CA

Sue Spooner, R.N., C.P.N.P.
Riverside County Department of Public Health
Riverside, CA



B-6 How to Effectively Serve Families at the Front End of CPS who Struggle with Substance Use Disorders: Four Models and Program Elements that Lead to Success

Location: Marina Ballroom 2

Description: This workshop will provide participants with evidence-based findings to support decision making regarding the implementation of effective service and practice approaches. Participants will learn about four innovative service/treatment models which were implemented and evaluated. Cross-site analysis will describe in detail those elements of service/treatment delivery which were most effective and the cross-system changes that enhance success. Participants will also hear about family characteristics, including substances used, and how these characteristics impact recovery and child welfare outcomes.

Presenters:

Carol J. Harper, M.P.A.
American Humane Association
Englewood, CO

Joanna D. Reynolds, M.A.
American Humane Association
Englewood, CO

B-7 Celebrating Families! An Innovative Approach for Working With Substance Abusing Families

Location: North Exhibit Hall B-C

Description: Celebrating Families! (CF!) is an intergenerational strength-based, cognitive-behavioral group model for families in early recovery. The presentation will address how the model was piloted with an evaluation incorporated, as part of the Family Treatment Drug Court. Early evaluation results show CF! decreases time to family reunification and teaches all family members how the disease of chemical dependency has impacted their lives.

Presenters:

Rosemary S. Tisch, M.A.
Prevention Partnership International
Family Resources International, Inc.
Saratoga, CA

Linda K. Sibley
Family Resources International Inc.
Santa Maria, CA

B-8 Substance Abuse Title IV-E Waiver Demonstrations - Evaluation Outcomes and Lessons Learned

Location: North Exhibit Hall D-E

Description: This workshop will provide an overview of four States' unique approaches to using Title IV-E funds to develop and implement substance abuse waiver demonstrations. The presenters will summarize evaluation findings on key child welfare outcomes and review important lessons learned with respect to implementation and child welfare policy. Participants will learn how to apply knowledge from this presentation to similar substance abuse prevention and treatment programs.

Presenters:

Elliott Graham, Ph.D.
James Bell Associates
Arlington, VA

Rosie Gianforte, L.C.S.W.
Illinois Department of Children and Family Services
Chicago, IL

Sam Gillespie
DCFS Service Intervention Division
Chicago, IL

Glenda Kaufman Kantor, Ph.D.
Family Research Laboratory, University of New Hampshire
Durham, NH

Bernie Bluhm, M. Ed.
New Hampshire Department of Health and Human Services
Concord, NH

Thursday February 1

7:00 a.m. – 5:00 p.m. Registration – Center Lounge

7:00 – 8:30 a.m. Continental Breakfast – South Exhibit Hall

8:30 – 8:40 a.m. Guardian Scholar Welcome – Grand Ballroom

Tohron Barnes, Guardian Scholar

Guardian Scholars participate in a comprehensive program of financial aid, life coaching, mentoring, housing and individualized attention that enable emancipated foster youth to successfully complete higher education. Guardian Scholars are sponsored by the Orangewood Children's Foundation, Santa Ana, CA.

8:40 – 9:20 a.m. Plenary Session – The Wounded Mother – Grand Ballroom



Stephanie S. Covington, Ph.D., L.C.S.W., Co-Director, Center for Gender and Justice

The words traditionally associated with family – security, love, nurturance, connection – are glaringly incongruent with the actual experience of family by many in our society.

While helping professionals often see the impact of neglect and abuse on a child's life, they often miss the impact of abuse, poverty, violence and addiction on the mother's life. Participants will learn more about gender-responsive services, family dynamics when there is abuse and addiction, and the impact of trauma on mothering.

9:20 – 10:00 a.m. Plenary Session – Responding to Methamphetamine in Child Welfare Practice – Grand Ballroom



Jay Wurscher, Alcohol & Drug Services Coordinator, State of Oregon Department of Human Services

The complexity of child welfare cases under legal time lines and court jurisdiction places high demands on today's caseworkers.

Knowing how addiction works, the specifics of methamphetamine, and what people with addictions respond to, can give caseworkers a huge advantage. Jay will discuss some essential elements for caseworkers as well as programs that can assist both casework and court practice to give children the best chance to go home to clean, sober and safe parents.

10:00 – 10:15 a.m. A Family's Perspective – Grand Ballroom

LaTonya Baskerville

Ms. Baskerville is a parent advocate at Jewish Child Care Association, a foster care agency in New York City. She serves as co-founder of the ReBuilders support group which brings foster parents and birth parents together.

10:15 – 10:30 a.m. Break – South Exhibit Hall

10:30 a.m. – 12:00 p.m. Workshop Session C

See pages 15-16 for workshop descriptions, presenters and room locations.

12:00 – 1:30 p.m. Lunch on Your Own

Suggestions for nearby dining are available at the registration table.

1:30 – 3:00 p.m. Workshop Session D

See pages 16-18 for workshop descriptions, presenters and room locations.

3:00 – 3:30 p.m. Break – South Exhibit Hall

3:30 – 5:30 p.m. Workshop Session E

See pages 18-20s for workshop descriptions, presenters and room locations.

5:30 – 6:30 p.m. The Listening Heart Video Screening – Marina Ballroom 2

We invite you to join Ira J. Chasnoff, M.D., and NTI Upstream for a very special screening of *The Listening Heart*, followed by a panel discussion featuring Dr. Chasnoff, Christine Schmidt, Psy.D., Greg Bailey, Ph.D., and Jan Campbell, R.N., P.H.N., and a parent of a child affected by FASD.

The Listening Heart is an educational documentary that chronicles the day-to-day challenges of children, parents, and families who struggle with the consequences of Fetal Alcohol Spectrum Disorder (FASD). The documentary offers a unique look into the world of FASD through the eyes of medical experts, adoptive parents, and those directly affected by the disorder – the children. Light refreshments will be served.

Thursday, February 1

Workshop Sessions – C 10:30 a.m. – 12:00 p.m.

C-1 Service vs. Systems Integration: The SART System of Care for Children and Families Affected by Substance Abuse – Part 1

Location: Marina Ballroom 2

Description: The SART System of Care integrates the child welfare, substance abuse, mental health and public health systems into a continuum of care to identify children and families affected by substance abuse and to link them to appropriate services. The presenters will discuss the difference between service and systems integration; describe the SART system of care for children and families; and analyze financial implications for cost savings through systems integration.

Presenters:

Ira J. Chasnoff, M.D.
Children's Research Triangle
Chicago, IL

Richard McGourty, Ph.D.
Children's Research Triangle, National Training Institute
Chicago, IL



Thursday, February 1 Workshop Sessions – C 10:30 a.m. – 12:00 p.m.

Workshop Title	Room
C-1 Service vs. Systems Integration: The SART System of Care for Children and Families Affected by Substance Abuse - Part 1 (See Workshop D-1 for Part 2)	Marina Ballroom 2
C-2 Effective Behavior Management Strategies for the Substance-Exposed Child	Avalon
C-3 What Can Be Done With Baling Wire and Chewing Gum?	Marina Ballroom 1
C-4 Laying the Groundwork in Policy and Practice: The Massachusetts Early Childhood Linkage Initiative	Coronado
C-5 Tribal Community Response and Perspectives to Methamphetamine	North Exhibit Hall D-E
C-6 Voices: A Gender-Responsive Curriculum for Girls	Marina Ballroom 4
C-7 Integrating Substance Abuse Competency Within a Statewide Child Welfare System	North Exhibit Hall B-C
C-8 Screening and Assessment for Family Engagement Retention and Recovery (SAFERR)	Marina Ballroom 3
C-9 Identifying and Preventing Fetal Alcohol Spectrum Disorders (FASD): A Hidden Cause of Relapse in Women as well as Behavioral and Cognitive Problems in Their Offspring	North Exhibit Hall G-H

C-2 Effective Behavior Management Strategies for the Substance-Exposed Child

Location: Avalon

Description: Typical behavior management strategies often do not work with children who have been exposed to drugs and alcohol in utero. This workshop will explore the importance of a multi-faceted behavior management approach and specific strategies that can be used with this population. Participants will learn how to identify and analyze target behaviors; describe the effects that the environment can have on behavior management; identify preventative strategies and differentiate them from reactive interventions; and develop an effective, individualized behavior management plan.

Presenter:

Erin Telford, Psy.D.
Children's Research Triangle
Chicago, IL

C-3 What Can Be Done With Baling Wire and Chewing Gum?

Location: Marina Ballroom 1

Description: The Polk County Family Drug Court attributes much of its success to regular communication and collaboration among substance abuse treatment providers, the State agency and the Court. The panel of presenters will share their knowledge and experiences in developing and sustaining a Family Drug Court Program within existing budgets and funding. Program outcomes will also be shared with the audience.

Presenters:

Judge Karla Fultz, J.D.
Iowa Judicial Branch, 5th Judicial District
Des Moines, IA

Todd Beveridge, M.S.W., M.S.
House of Mercy
Des Moines, IA

C-4 Laying the Groundwork in Policy and Practice: the Massachusetts Early Childhood Linkage Initiative

Location: Coronado

Description: The Massachusetts Early Childhood Linkage Initiative (MECLI) piloted the development of a formal linkage between Early Intervention (Part C) services for children from birth to age three years and the child welfare State agency, Department of Social Services. The presenters will discuss how the project linked State policy makers, local programs and a prominent university to implement the referral to Part C provision of the Child Abuse Prevention and Treatment Act (CAPTA) prior to it becoming law. This project led to the Department of Public Health, lead agency for Part C, being funded by the Children's Bureau as one of four projects to implement the Substance-Exposed Newborns provisions of CAPTA.

Presenters:

Katharine Thomas
Institute for Health and Recovery
Cambridge, MA

John A. Lippitt, Ph.D.
MA Department of Public Health
Boston, MA

C-5 Tribal Community Response and Perspectives to Methamphetamine

Location: North Exhibit Hall D-E

Description:

Tribal community response to the child welfare and the methamphetamine epidemic creates an opportunity to engage communities in a unique way. This workshop will examine perspectives and emerging models used in tribal communities. Products developed by National Indian Child Welfare Association (NICWA) partners will be provided and demonstrated.

Presenter:

Nadja Jones, M.S.W.
National Indian Child Welfare Association
Portland, OR

C-6 Voices: A Gender-Responsive Curriculum for Girls

Location: Marina Ballroom 4

Description: This workshop will present a strength-based, trauma-informed manualized curriculum based on the integration of the following theories: psychological development, attachment, resilience, trauma and addiction. Dr. Covington will discuss specific clinical strategies for working with issues that are critical in girls' lives: sense of self, connection with others, healthy living and the journey ahead.

Presenter:

Stephanie S. Covington, Ph.D., L.C.S.W.
Center for Gender and Justice
La Jolla, CA

C-7 Integrating Substance Abuse Competency within a Statewide Child Welfare System

Location: North Exhibit Hall B-C

Description: In 1998, the Department of Social Services (DSS) developed several inter-agency initiatives and created the DSS Substance Abuse Unit. This plan was implemented within each region of the State, providing experienced substance abuse professionals to offer technical assistance to the child welfare system. This presentation will explore important aspects of the DSS Substance Abuse Unit initiative.

Presenters:

Kim Bishop-Stevens, L.I.C.S.W.
Department of Social Services
Boston, MA

Loretta Butehorn, Ph.D.
Department of Social Services
Boston, MA

C-8 Screening and Assessment for Family Engagement, Retention and Recovery (SAFERR)

Location: Marina Ballroom 3

Description: This workshop will present the SAFERR (Screening and Assessment for Family Engagement, Retention and Recovery) model for helping staff of public and private agencies respond to families affected by substance use disorders. While SAFERR suggests standards of practice within each of the three systems, its focus is on the connections, communications and collaborative capacities across them.

Presenter:

Nancy Young, Ph.D.
Children and Family Futures
Irvine, CA

C-9 Identifying and Preventing Fetal Alcohol Spectrum Disorders (FASD): A Hidden Cause of Relapse in Women As Well As Behavioral and Cognitive Problems in Their Offspring

Location: North Exhibit Hall G-H

Description: To prevent future cases of Fetal Alcohol Spectrum Disorder (FASD) and support children with FASD, we must focus on prioritizing education, intervention, treatment and prevention of FASD in addiction treatment centers and child welfare agencies. This presentation will provide a comprehensive overview of FASD, discussing techniques that are useful in assessing, intervening, and engaging women in recovery. There will be a focus on recidivism in women, with an overview of how prenatal alcohol exposure can be an unexamined source for previous treatment failures.

Presenter:

Kathleen Tavenner Mitchell, M.H.S., L.C.A.D.C.
National Organization on Fetal Alcohol Syndrome
Olney, MD

Thursday, February 1

Workshop Sessions – D 1:30 – 3:00 p.m.

D-1 Service vs. Systems Integration: The SART System of Care for Children and Families Affected by Substance Abuse – Part 2

Location: Marina Ballroom 2

Description: The SART System of Care integrates the child welfare, substance abuse, mental health and public health systems into a continuum of care to identify children and families affected by substance abuse and to link them to appropriate services. The presenters will discuss the difference between service and systems integration; describe the SART System of Care for children and families; and analyze financial implications for cost savings through systems integration.

Presenters:

Ira J. Chasnoff, M.D.
Children's Research Triangle
Chicago, IL



Thursday, February 1 Workshop Sessions – D 1:30 – 3:00 p.m.

Workshop Title	Room
D-1 Service vs. Systems Integration: The SART System of Care for Children and Families Affected by Substance Abuse – Part 2 (See Workshop C-1 for Part 1)	Marina Ballroom 2
D-2 What's Next? An Exploration of Co-Occurring Diagnostic Issues in the Prenatally Exposed Child	Avalon
D-3 An Evaluation of Family Treatment Drug Courts: Bridging Research and Practice	Marina Ballroom 1
D-4 NCJFCJ Model Courts: Ten Years of Best Practices	Coronado
D-5 Building a Collaborative Partnership to Address Fetal Alcohol Spectrum Disorders (FASD)	Marina Ballroom 3
D-6 Substance Abuse Programs Reviewed by the California Evidence-Based Clearinghouse for Child Welfare	Marina Ballroom 4
D-7 A Win-Win Strategy: Utilizing Family Visiting to Support the Goals of Lasting Recovery and Family Reunification/ Permanency	North Exhibit Hall D-E
D-8 Missing from the Table: The Critical Role of Substance Abuse Providers in Family Group Decision Making Processes	North Exhibit Hall G-H

Richard McGourty, Ph.D.
 Children's Research Triangle, National Training Institute
 Chicago, IL

D-2 What's Next? An Exploration of Co-Occurring Diagnostic Issues in the Prenatally Exposed Child

Location: Avalon

Description: This workshop will investigate common co-occurring diagnoses in children with a history of prenatal substance exposure. The complexity of issues for these children will be explored, particularly as it relates to differentiating between substance induced effects, problems due to other diagnoses, or interactions between the two areas. The effects of the environment and trauma will also be highlighted, particularly the effects on the child's overall outcome.

Presenters:
 Erin Telford, Psy.D.
 Children's Research Triangle
 Chicago, IL

Amy Groessl, L.C.S.W.
 Children's Research Triangle
 Chicago, IL

D-3 An Evaluation of Family Treatment Drug Courts: Bridging Research and Practice

Location: Marina Ballroom 1

Description: This workshop will review findings from a study of FTDCs and discuss implications for practice. Data will highlight differences between FTDC and traditional case processing, explore whether FTDCs work more effectively for certain parents and identify factors related to program success.

Presenters:
 Beth Green, Ph.D.
 NPC Research
 Portland, OR

Scott Burrus, M.A.
 NPC Research
 Portland, OR

D-4 NCJFCJ Model Courts: Ten Years of Best Practices

Location: Coronado

Description: The NCJFCJ (National Council of Juvenile and Family Court Judges) Model Courts Project began in 1996 with one Model Court in Cincinnati and has expanded to 32 Model Courts in 27 States. Model Courts engage in collaborative approaches to best practices, developing cutting-edge programs and initiatives to address multiple needs of the children and families in dependency cases. The presenter will discuss policy and program development within the Model Courts Project, cross-system collaboration and partnerships, and fundamental best practices which address the multiple needs of affected families.

Presenter:
 Elizabeth Whitney Barnes, J.D.
 National Council of Juvenile and Family Court Judges
 Reno, NV



D-5 Building a Collaborative Partnership to Address Fetal Alcohol Spectrum Disorders

Location: Marina Ballroom 3

Description: Fetal Alcohol Spectrum Disorders (FASD) are permanent birth defects caused by prenatal alcohol exposure. This workshop will explain FASD and its resulting primary and secondary disabilities as well as potential intervention strategies. New York's interagency Prevention Task Force will be discussed, along with the collaborative partnerships being implemented to help women in different health and social service systems.

Presenter:

Margo B. Singer, M.P.A.
New York State Office of Alcoholism and Substance Abuse Services
Albany, NY

D-6 Substance Abuse Programs Reviewed by the California Evidence-Based Clearinghouse for Child Welfare

Location: Marina Ballroom 4

Description: The California Department of Social Services (DSS), in cooperation with the Chadwick Center for Children and Families—Children's Hospital San Diego and the Child and Adolescent Services Research Center (CASRC), has established the California Evidence-Based Clearinghouse for Child Welfare (CEBC). The purpose of the CEBC is to provide information and guidance on selected child welfare evidence-based programs and practices (EBP) to statewide agencies, counties, public and private organizations, academic institutions, and individuals, to facilitate the broad use of EBPs to improve child welfare outcomes. Participants will specifically learn about evidence-based substance abuse programs that are relevant to child welfare.

Presenters:

Laine Alexandra, L.C.S.W.
Chadwick Center for Children and Families,
Rady Children's Hospital and Health Center
San Diego, CA

Charles Wilson, M.S.S.W.
Chadwick Center for Children and Families,
Rady Children's Hospital and Health Center
San Diego, CA

Cambria Rose, L.C.S.W.
Chadwick Center for Children and Families,
Rady Children's Hospital and Health Center
San Diego, CA

D-7 A Win-Win Strategy: Utilizing Family Visiting to Support the Goals of Lasting Recovery and Family Reunification/ Permanency

Location: North Exhibit Hall D-E

Description: This workshop will examine family visiting as a critically important intervention that safeguards children's well-being while simultaneously promoting the goals of lasting recovery and family reunification/permanency. Specific techniques and strategies for facilitating creative and meaningful visiting in the context of substance abuse treatment will be provided.

Presenters:

Tanya Krupat, M.P.H., L.M.S.W.
COAF, Phoenix House
New York, NY

La Tonya Baskerville
Jewish Child Care Association
Bronx, NY

D-8 Missing from the Table: The Critical Role of Substance Abuse Providers in Family Group Decision Making Processes

Location: North Exhibit Hall G-H

Description: Family group decision making (FGDM) is an innovative approach that positions the family group as leaders in decision making about their children's safety, permanency and well-being. Through FGDM processes, children, youth, families and their support networks and community members are given the opportunity to develop plans – plans that because of the family group's make-up have a greater likelihood of being family-centered, reflective of the family group's culture and strengths. The presenter will share a vision and strategies for the inclusion of substance abuse providers in FGDM processes.

Presenter:

Lisa Merkel-Holguin, M.S.W.
National Center on FGDM, American Humane Association
Englewood, CO

Thursday, February 1

Workshop Sessions – E 3:30 – 5:00 p.m.

E-1 Building Community and Client-Level Relationships to Support Substance Affected Families with Infants or Young Children: Lessons Learned from AIA Programs

Location: Coronado

Description: This workshop will share lessons learned from 15 years of providing community-based support services to families affected by substance abuse and involved, or at risk of involvement, in the child welfare system. Based on individual and cross-site program evaluations and the collective wisdom of key program staff, the lessons will emphasize inter-agency collaboration, family engagement, and individualized services provided primarily in the home. Several program models will also be described.

Presenters:

Amy Price, M.P.A.
National Abandoned Infants Assistance Resource Center
Berkeley, CA



Thursday, February 1 Workshop Sessions – E 3:30 – 5:00 p.m.

Workshop Title	Room
E-1 Building Community and Client-Level Relationships to Support Substance Affected Families with Infants or Young Children: Lessons Learned from AIA Programs	Coronado
E-2 Home-Based Wrap Around Services to Substance-Abusing Women and Their Infants	Avalon
E-3 How Far In Five Years: A Five Year Perspective of the Process and Outcomes of the Arizona Families F.I.R.S.T. Program	Marina Ballroom 1
E-4 Multidisciplinary Collaborative Model Development to Respond to Substance-Exposed Newborns	Marina Ballroom 4
E-5 Family Treatment Drug Court: Creating a Team and Making it Work	Marina Ballroom 3
E-6 Failure by Fragmentation: The Top Ten Avoidable Mistakes of Collaboration, Drawn from Forty Years of History	Marina Ballroom 2
E-7 Systems Collaboration for Tribal Communities	North Exhibit Hall B-C
E-8 Findings from the Sacramento County Dependency Drug Court: Systems Change and Its Impact on Permanency	North Exhibit Hall G-H
E-9 Recovering Together: Family Treatment	North Exhibit Hall D-E

Oneta Templeton McMann, L.C.S.W.
TIES Program, Children's Mercy Hospital
Kansas City, MO

E-2 Home-Based Wrap Around Services to Substance-Abusing Women and Their Infants

Location: Avalon

Description: The workshop will describe an in-home treatment model for substance-abusing women and their infants. The presenters will offer program specific interventions and tools to engage and treat this population. Outcome data on permanency and stability of placement will be included in the discussion.

Presenters:

Jean Adnopoz, M.P.H.
Child Study Center, Yale University School of Medicine
New Haven, CT

Karen E. Hanson, L.C.S.W.
Child Study Center, Yale University School of Medicine
New Haven, CT

Christian M. Connell, Ph.D.
Department of Psychiatry, Yale University School of Medicine
New Haven, CT

E-3 How Far In Five Years: A Five Year Perspective of the Process and Outcomes of the Arizona Families F.I.R.S.T. Program

Location: Marina Ballroom 1

Description: This presentation provides an overview of

the process and evaluative outcomes for the past five years of the Arizona Families F.I.R.S.T. (Families in Recovery Succeeding Together) program serving substance-abusing parents involved in the child welfare and TANF (Temporary Assistance to Needy Families) systems. In addition, the session will highlight successes and challenges from key stakeholders in the program - child welfare representatives and substance abuse service providers - in their work across the child welfare and behavioral health systems.

Presenters:

Brian L. Arthur, M.A.
Applied Behavioral Health Policy, Arizona State University
Tucson, AZ

Nancy Hansen, M.S.W.
Arizona Department of Economic Security,
Division of Children, Youth & Families
Phoenix, AZ

E-4 Multidisciplinary Collaborative Model Development to Respond to Substance-Exposed Newborns

Location: Marina Ballroom 4

Description: This workshop will highlight a collaborative cross-discipline program that is designed to identify and serve substance-exposed newborns and their families through best practice approaches from the child welfare, drug treatment, and legal and health care systems. The program focuses on creating system integration and maximizing existing services to promote healthy development. The panel of presenters will also discuss evaluation approaches that may be used to measure the effectiveness of such a model program.



Presenters:

Kathryn M. Wells, M.D.
DDHS, University of Colorado School of Medicine
Denver, CO

Donna Hamburg, M.A.
Denver Department of Human Services
Denver, CO

Christina Little, Ph.D.
Kempe Children's Center
Denver, CO

E-5 Family Treatment Drug Court: Creating a Team and Making it Work

Location: Marina Ballroom 3

Description: This workshop will present effective cross-system strategies to support child welfare involved families affected by addiction. The workshop will include a panel presentation by representatives from the Family Treatment Drug Court (FTDC), Vulnerable Infants Program (VIP) Care Coordinator, State Child Welfare, Public Defender's Office and the Program Evaluator. The presenters will discuss issues and potential barriers to implementation of family treatment courts and describe effective systems level collaboration strategies. Incorporating program evaluation into the team approach to improve program functioning and effectiveness will also be highlighted.

Presenters:

Rosemary Soave, M.S.W.
Women and Infants Hospital, VIP Program
Providence, RI

Donna Caldwell, Ph.D.
National Perinatal Information Center
Providence, RI

Linda Lynch
Rhode Island Family Court
Providence, RI

E-6 Failure by Fragmentation: The Top Ten Avoidable Mistakes of Collaboration, Drawn from Forty Years of History

Location: Marina Ballroom 2

Description: Mr. Gardner has worked in the fields of collaboration and services integration since 1965. He will review the lessons from his experience as they relate to today's challenges facing agencies and organizations as they seek better connections in their work with children and families.

Presenter:

Sid Gardner, M.P.A.
Children and Family Futures
Irvine, CA

E-7 Systems Collaboration for Tribal Communities

Location: North Exhibit Hall B-C

Description: How can American Indian tribes reconcile the system challenges that emerge when families are served through child welfare, substance abuse treatment, and the tribal Court simultaneously? Understanding the critical values of each system is key to negotiating new agreements and improved practice models. This workshop will help participants to: 1) build foundation knowledge of tribal system collaboration; 2) identify key management functions that contribute to systems collaboration; and 3) assess organization capability for systems change.

Presenter:

Nadja Jones, M.S.W.
National Indian Child Welfare Association
Portland, OR

Pamela Hammond
Squaxin Island Health and Human Services
Shelton, WA

E-8 Findings from the Sacramento County Dependency Drug Court: Systems Change and its Impact on Permanency

Location: North Exhibit Hall D-E

Description: Dependency Drug Courts have emerged as a promising method of enhancing the functional status and reunification success of families involved in child welfare who are affected by substance use disorders. However, few evaluations have been conducted to help inform the discussion about their effectiveness in achieving these outcomes. This workshop will describe systemic practice and policy changes and highlight program outcomes in substance abuse treatment and child welfare practices. The evaluation model based on existing information systems and Federal outcome measures will be described.

Presenters:

Nancy K. Young, Ph.D.
Children and Family Futures
Irvine, CA

Sharon Boles, Ph.D.
Children and Family Futures
Irvine, CA

E-9 Recovering Together: Family Treatment

Location: North Exhibit Hall B-C

Description: This workshop will describe the Family Treatment Model for working with families affected by substance dependence as designed by SHIELDS for Families in South Central Los Angeles. The Model has proved successful with families affected by substance dependence. Advantages and challenges of implementing the Family Treatment Model will be explored.

Presenters:

Kathryn Icenhower, Ph.D., L.C.S.W.
SHIELDS for Families
Los Angeles, CA

Sara Tienda, M.S.W.
SHIELDS for Families
Los Angeles, CA

Friday February 2



7:00 a.m. – 12:30 p.m. Registration – Center Lounge

7:00 – 8:00 a.m. Continental Breakfast – South Exhibit Hall

8:00 – 8:30 a.m. Plenary Session – The National Center on Substance Abuse and Child Welfare and the National Collaborative Leadership Award – Grand Ballroom

Introduction of the National Center on Substance Abuse and Child Welfare

Nancy K. Young, Ph.D., Director, National Center on Substance Abuse and Child Welfare

Introduction of the NCSACW Consortium Member Organizations

Kathy Nardini, M.A.

National Association of State Alcohol and Drug Abuse Directors

Gretchen D. Kolsky, M.P.H.

American Public Human Services Association

Diana English, Ph.D.

Child Welfare League of America

Elizabeth Whitney Barnes, J.D.

National Council of Juvenile and Family Court Judges

Nadja Jones, M.S.W.,

National Indian Child Welfare Association

8:30 – 8:45 a.m. National Collaborative Leadership Award – Grand Ballroom

Presented to:

Kathryn M. Wells, M.D., F.A.A.P.

Special Recognition Awarded to:

Karen Mooney, L.C.S.W., C.A.C. III

Peter Panzarella, M.A., M.S., L.A.D.C., L.P.C.

8:45 – 9:15 a.m. Plenary Session – Family Centered Treatment for Parents with Substance Use Disorders – Grand Ballroom



Sharon Amatetti, M.P.H., Senior Policy Analyst, Center for Substance Abuse Treatment, Substance Abuse and Mental Health Services Administration

Treatment for parents with substance use disorders is evolving from an individually based model toward family centered services. This plenary will describe how politics, funding, multi-service system strains and identified treatment needs has created a demand for comprehensive family programs. Expected challenges and outcomes of moving toward these models will also be discussed.

9:15 – 10:15 a.m. Plenary Session – Adolescents and Family Treatment – Grand Ballroom



Randolph Muck, M.Ed., Lead Public Health Advisor, Practice Improvement Branch Division of Services Improvement, Center for Substance Abuse Treatment, Substance Abuse and Mental Health Services Administration

The presentation will highlight the need for treatment of the family with a special focus on adolescents with substance use and co-occurring disorders who are in the child welfare system. The Center for Substance Abuse Treatment's adolescent data set on over 14,000 admissions of youth for treatment services will highlight the need for services and some of the emergent issues in adolescent treatment with a family focus.

10:15 – 10:45 a.m. Break – South Exhibit Hall

10:45 – 11:30 a.m. Plenary Session – Family Centered Treatment: The Exodus Program – Grand Ballroom



Kathryn Icenhower, L.C.S.W., Ph.D., Executive Director, SHIELDS for Families

Family centered treatment approaches allow for the entire family unit to begin the process of recovery. This session will describe the SHIELDS for Families' Exodus Program – a non-traditional residential program that houses the entire family in an 86 unit apartment complex and provides the substance abuse treatment, mental health and vocational services, a child development program and youth program on-site. An overview of the program's objectives and outcomes will be discussed.

11:30 – 11:45 a.m. A Family's Perspective – Grand Ballroom

Sally Tapia

Sally Tapia is a graduate of the Exodus program. She is in her second year of college, receiving an AA in human services, and preparing to transfer to a Bachelor's degree in Social Work program next fall. She is currently a drug diversion program case manager with clients in the criminal justice system.

11:45 a.m. – 12:30 p.m. Closing Keynote – It's Monday Morning: What Do We Do Now? – Grand Ballroom



Nancy K. Young, Ph.D., Director, Children and Family Futures

This session will review the highlights of the conference, drawing out the "take-home lessons" that begin to answer the inevitable post-conference question: What do we do Monday morning? The central issue of sustainability at the state and local levels will be addressed, and key steps to achieving sustainability for innovative projects and systems change will be discussed. Tools for sustaining collaborative programs will also be presented.

12:30 p.m. Drawing for Exhibit Visit Card prizes – Grand Ballroom

Presenter Profiles

Jean Adnopo, M.P.H.

Clinical Professor, Coordinator of Community Services
Child Study Center, Yale University School of Medicine
New Haven, CT

Ms. Adnopo is a Clinical Professor in the Yale Child Study Center and Coordinator of In-Home Child and Family Interventions. She has been instrumental in developing comprehensive home-based service models for children at risk of separation from caregivers and vulnerable for placement outside of the home.

Laine Alexandra, L.C.S.W.

Project Manager
California Evidence-Based Clearinghouse for Child Welfare
Chadwick Center for Children and Families,
Rady Children's Hospital and Health Center
San Diego, CA

Ms. Alexandra is the Project Manager for the California Evidence-Based Clearinghouse for Child Welfare. She has worked at the Chadwick Center for Children and Families at Rady Children's Hospital and Health Center located in San Diego for over eight years. She served as Coordinator of an Office of Criminal Justice Programs funded collaborative grant, which teamed the San Diego Sheriff's Child Abuse Unit, Children's Services Bureau, and Chadwick Center to intervene with misdemeanor level child abuse cases. Prior to that, Ms. Alexandra also worked as a front line worker for the Children's Services Bureau in San Diego for 8 years.

Sharon Amatetti, MPH

Senior Policy Analyst
Center for Substance Abuse Treatment
Substance Abuse and Mental Health Services
Administration
Rockville, MD

Ms. Amatetti is a Senior Policy Analyst for the Substance Abuse and Mental Health Services Administration (SAMHSA), Center for Substance Abuse Treatment (CSAT) and Coordinator of the Center's Women and Families Coordinating Committee. She is responsible for ensuring that women, youth and family issues are coordinated with the other SAMHSA Centers and Federal agencies, and that adequate attention to women, youth and families is incorporated throughout all CSAT programs. Ms. Amatetti also manages the Center's activities pertaining to child welfare and the impact of parental alcohol and drug abuse on children. Her work in this area includes management of an inter-agency agreement with the Administration for Children, Youth and Families to advance cross-system coordination which in part involved the development and management of the National Center on Substance Abuse and Child Welfare.

Brian L. Arthur, M.A.

Associate Director
Applied Behavioral Health Policy, Arizona State University
Tucson, AZ 85705

Mr. Arthur serves as the Associate Director of Applied Behavioral Health Policy. In this role, he is responsible for overall administrative and evaluation support operations for the center. In addition, he is the Evaluation Coordinator for a number of on-going Federal and State funded research projects.

Gregory Bailey, Ph.D.

Clinical Psychologist
Children's Research Triangle
Chicago, IL

Dr. Bailey earned his doctorate in Clinical Psychology from Loyola University Chicago. He provides assessment and treatment services for school-aged children, adolescents, and their families at Children's Research Triangle. Dr. Bailey directed CRT's four year, CDC (Centers for Disease Control and Prevention) funded study aimed at treating the neuro-cognitive and behavioral deficits of children with fetal alcohol syndrome (FAS).

Lindsay Bailey

Child Development Specialist
Children's Research Triangle
Chicago, IL

Ms. Bailey is a Child Development Specialist who serves on the 0-3 team at Children's Research Triangle. She received her Masters in Child Development with a Specialization in Infancy from the Erikson Institute in Chicago. She has extensive experience with children, including teaching preschool. Ms. Bailey also serves as the Coordinator of Camp SOAR, CRT's summer camp for children with special needs and is the Coordinator of several grants.

Elizabeth Whitney Barnes, J.D.

Model Court Liaison
National Council of Juvenile and Family Court Judges
University of Nevada
Reno, NV

Ms. Barnes earned her Juris Doctor from the University of San Francisco School of Law. As a National Council of Juvenile and Family Court Judges Model Court Liaison, she is a direct service provider who works closely with Courts handling dependency cases nationwide. In her role as a Liaison, Ms. Barnes helps to facilitate systems change through the provision of technical assistance, consultation, research, and evaluation.

**La Tonya Baskerville**

Parent Advocate
Jewish Child Care Association
Bronx, NY

Ms. Baskerville is a Parent Advocate at Jewish Child Care Association, a foster care agency in New York City. She serves as Co-Founder of the ReBuilders support group which brings foster parents and birth parents together. She is a trained Visit Coach who has extensive knowledge of the child welfare and substance abuse treatment systems. Ms. Baskerville is a powerful and effective speaker and has presented at numerous conferences, trainings and events.

Deborah Bertges, M.A., L.M.H.C., L.A.D.C. 1

Psychotherapist, Trainer and Clinical Consultant
Private Practice
Newburyport, MA

Ms. Bertges is an independent Psychotherapist, Trainer and Clinical Consultant, specializing in the inter-relationship of addiction and trauma. She provides program development and on-going clinical services for the Safe Recovery Program, the first Department of Social Services (DSS) State-funded residential program in Massachusetts to simultaneously address these complex issues. Ms. Bertges currently has a private practice where she conducts individual and group work and provides clinical consulting and training services.

Jacqueline Bertrand, Ph. D

Centers for Disease Control and Prevention
U.S. Department of Health and Human Services
Atlanta, GA

Dr. Bertrand has conducted federally funded research on the neurodevelopment of children, including children with genetic disorders, children exposed to environmental toxins, and children with prenatal exposure to alcohol. Since 1996 she has worked in the developmental disabilities and fetal alcohol syndrome prevention programs at the Centers for Disease Control and Prevention. Dr. Bertrand has published and presented nationally and internationally on developmental disabilities and Fetal Alcohol Syndrome, focusing on neurodevelopmental and family issues associated with these disorders. She currently oversees a multi-site project to integrate into community settings scientifically based interventions for children with disabilities resulting from prenatal exposure to alcohol.

Todd Beveridge, M.S.W., M.S.

Director
House of Mercy
Des Moines, IA

Mr. Beveridge has served as the Director of The House of Mercy, a residential and outpatient substance abuse treatment facility since 1995. He previously worked as the Director of Social Services for Mercy Medical Center and the Coordinator for the Alcohol Dependency Program at the VA Center in Des Moines, Iowa. Mr. Beveridge completed his M.S.W. from the University of Nebraska-Lincoln and his M.S. in Health Care Administration from UOMHS in Des Moines.

Kim Bishop-Stevens, L.I.C.S.W.

Acting Director Substance Abuse
Department of Social Services
Boston, MA

Ms. Bishop-Stevens is Acting Director of the Substance Abuse Unit at the Department of Social Services (DSS). She oversees the development and implementation of policies, practices and training related to substance abuse and child welfare. Ms. Bishop-Stevens serves as DSS's primary liaison for substance abuse interagency initiatives.

Bernie Bluhm, M.Ed.

New Hampshire Department of Health and Human
Services Division of Children, Youth and Families
Concord, NH

Mr. Bluhm has extensive experience in child welfare field work, child abuse prevention and program supervision, specializing in the areas of co-occurring parental substance abuse and domestic violence. He facilitates the New Hampshire Department of Children Youth and Families' strategic planning process and manages programs addressing substance abuse, domestic violence and training.

Sharon Boles, Ph.D.

Director of Research
Children and Family Futures
Irvine, CA

Dr. Boles serves as Evaluation Director of Children and Family Futures (CFF), Inc., whose staff implements the National Center on Substance Abuse and Child Welfare (NCSACW). She currently serves as the Lead Evaluator for the Sacramento Dependency Drug Court. Dr. Boles also serves as a Grant Reviewer for the Center for Substance Abuse Treatment (CSAT) and the Substance Abuse and Mental Health Services Administration (SAMHSA). She received her doctorate from the University of California, Santa Barbara.



Phil Breitenbucher, M.S.W.

Program Development Manager
 Riverside Department of Public Social Services
 Murrieta, CA

Mr. Breitenbucher earned his B.A. in Psychology from California Baptist University and his M.S.W from California State University, San Bernardino. He began his career with Riverside County, Child Protective Services as a Social Worker and then as a Supervisor in Emergency Response and Children's Development Unit. He assisted in the development of the Riverside Dependency Drug Court; the self-assessment and implementation of the State of California, Children's Services Outcomes and Accountability System; and implementation of the Family to Family initiative.

Scott Burrus, M.A.

Researcher
 NPC Research
 Portland, OR

For the past 7 years Mr. Burrus has managed projects focused on how the judicial, child welfare, and treatment systems serve families involved with child welfare due to parental substance abuse, including the National Evaluation of Family Treatment Drug Courts.

Loretta Butehorn, Ph.D.

Clinical Consultant
 Department of Social Services
 Boston, MA

Dr. Butehorn has been a Consultant to both the substance abuse and child welfare communities in New England for the past 25 years. She serves as adjunct faculty at Boston University teaching undergraduate courses in psychology and graduate courses in consultation and management. Dr. Butehorn currently acts as Consultant Clinical Supervisor to the Department of Social Services Substance Abuse Coordinator's Unit.

Donna Caldwell, Ph.D.

Evaluator
 National Perinatal Information Center
 Providence, RI

Dr. Caldwell is Director of Evaluation and Research at the National Perinatal Information Center in Providence, Rhode Island. She is a Psychologist with an expertise in program evaluation. Dr. Caldwell has worked for over 25 years in the area of behavioral health services for women and children both as a direct service provider and as a researcher. Dr. Caldwell leads the evaluation team for the Family Treatment Drug Court project.

Jan Campbell, R.N., B.S.N.

Maternal Child Health Director
 San Luis Obispo County Health Department
 San Luis Obispo, CA

Ms. Campbell is the Maternal Child and Adolescent Health Director for San Luis Obispo County. She has worked in public health for the past 22 years and has been a major leader in the implementation of the Perinatal Substance Abuse Screening, Assessment, Referral and Treatment Program. She is also a member of the State Fetal Alcohol Spectrum Disorder Task Force.

Heather Carmichael Olson, Ph.D.

Faculty Member
 Department of Psychiatry and Behavioral Sciences
 University of Washington School of Medicine
 Attending Psychologist
 Children's Hospital and Medical Center
 University of Washington FAS Diagnostic Clinic
 Seattle, WA

Dr. Carmichael Olson is a Faculty Member in the Department of Psychiatry and Behavioral Sciences at the University of Washington School of Medicine. She is also an Attending Psychologist at Children's Hospital and Medical Center in Seattle, Washington, and at the University of Washington FAS Diagnostic Clinic. Dr. Carmichael Olson has been involved in research and clinical services with families raising children with fetal alcohol spectrum disorders since 1989.

Ira J. Chasnoff, M.D.

President
 Children's Research Triangle
 Chicago, IL

Dr. Chasnoff is President of Children's Research Triangle and a Professor of Pediatrics at the University of Illinois College of Medicine in Chicago. He is one of the nation's leading researchers in the field of maternal drug use during pregnancy and the effects on the newborn infant and child.

Claire Coles, Ph.D.

Director
 Fetal Alcohol Center
 Marcus Institute
 Emory University School of Medicine
 Atlanta, GA

Dr. Coles is Director of the Fetal Alcohol Center, Marcus Institute and Professor in the Department of Psychiatry and Behavioral Sciences at Emory University School of Medicine in Atlanta, Georgia. As Director of the Fetal Alcohol Center, Dr. Coles provides diagnostic and clinical services to children prenatally exposed to alcohol, cocaine and other drugs.



Christian M. Connell, Ph.D.

Assistant Professor of Psychology/CIWI Program Evaluator
Department of Psychiatry Yale University School
of Medicine
New Haven, CT

Dr. Connell is the Director of Child Development and
Epidemiological Research at the Yale University
Consultation Center. He has extensive experience
evaluating child welfare data on the State and local levels.

Theresa E. Costello, M.A.

Director
National Resource Center for Child Protective Services
ACTION for Child Protection, Inc.
Albuquerque, New Mexico

Ms. Costello is the Associate Director of ACTION for Child
Protection and the Director of the National Resource
Center for Child Protective Services. Ms. Costello provides
technical assistance in numerous areas relevant to CPS,
including safety intervention, risk assessment, differential
response, and organizational and program development.
Ms. Costello received her M.A. in Public Affairs from the
Hubert H. Humphrey Institute of Public Affairs at the
University of Minnesota.

Jackie Crow Shoe

Social Service Program Consultant
Child Safety and Permanency
Minnesota Department of Human Services
Saint Paul, MN

Ms. Crow Shoe is a Social Service Program Consultant
who currently oversees the Children's Justice Initiative
Alcohol and Other Drug Project. Commencing in early
2005, the project aims to enhance the capacity of the
child welfare, chemical health and court systems as well as
further develop cross-systems partnerships and improve
practices. Ms. Crow Shoe has 15 years experience in
the areas of domestic violence, sexual assault, and
legal services, working in multiple capacities as a direct
services worker, director, and consultant. She is also a
member of the Turtle Mountain Band of Chippewa Indians
in North Dakota.

Stephanie S. Covington, Ph.D., L.C.S.W.

Co-Director
Center for Gender and Justice
La Jolla, CA

Dr. Covington is a clinician, author and consultant who is
recognized for her pioneering work in the development
of services for women and girls. She has more than 25
years of experience in the design, development and
implementation of treatment services for women and is
well-known for her work in gender-responsive services in
both the public and private sectors. Dr. Covington has
published extensively and provides consulting services in
a wide range of health, social service and criminal justice
arenas. She is based in La Jolla, California.

Emily Davern, M.S.W., L.I.C.S.W.

Program Manager, Domestic Violence Unit
Director, Housing Stabilization Unit
Massachusetts Department of Social Services
Boston, MA

Ms. Davern is a Licensed Independent Clinical Social
Worker and Program Developer with the Massachusetts
Department of Social Services. She has been instrumental
in developing a unique program model of services for
substance-abusing battered women and their children.
Ms. Davern currently works in the Domestic Violence Unit
and also directs the Housing Stabilization Unit.

Kari J. Earle, M.Ed., L.A.D.C.

Consultant
National Center on Substance Abuse and Child Welfare
Irvine, CA

Ms. Earle provides consulting services both locally and nation-
ally to regional and state government entities, human service
providers, and coalitions, with expertise in the areas of strategic
planning, evaluation, business planning, meeting facilitation, for
the purposes of assisting organizations to improve infrastruc-
ture, expand capacity and develop sustainable resources.

Judge Karla Fultz, J.D.

Associate Juvenile Court Judge
Iowa Judicial Branch, 5th Judicial District
Des Moines, IA

Judge Fultz was appointed to the bench in 1993. She
received her bachelor's and law degrees from Drake
University, graduating Phi Beta Kappa in 1967. After earning
her law degree in 1969, she worked as an attorney for Polk
County Legal Aid, then later as Assistant Polk County
Attorney. Since 1999, Judge Fultz has served as the
presiding judge for the Polk County juvenile drug court.
She has also served as the presiding judge for the Polk
County family drug court since its inception in 2002.

Sid Gardner, M.P.A.

President
Children and Family Futures
Irvine, CA

Mr. Gardner is the president of Children and Family Futures,
a non-profit firm based in Irvine, CA, whose mission is to
improve outcomes for children and families, particularly those
affected by substance use disorders. He has been Director of
the Center for Collaboration for Children at California State
University, Fullerton; Program Officer of the Annie E. Casey
Foundation; Staff Member on the White House Domestic
Council; Director of State and Local Affairs for the Children's
Defense Fund; Deputy Assistant Secretary of the U.S.
Department of Health, Education and Welfare; and Consultant
to the National Governors' Association, U.S. Conference of
Mayors and National League of Cities. He is the author of
*Beyond Collaboration to Results and Cities, Counties, Kids
and Families*, which outlines the role of local governments in
strategic planning for children and family policy.



Rosie Gianforte, L.C.S.W.

Alcohol and Other Drug Abuse Waiver Coordinator
Illinois Department of Children and Family Services
Chicago, IL

Ms. Gianforte is a Licensed Clinical Social Worker and earned her Master of Arts in Social Service Administration from the University of Chicago in 1988. She has 16 years experience working in the social service field, including in the areas of school social work, partial hospitalization care and child welfare. She currently serves as Coordinator of the Title IV-E Alcohol and Other Drug Abuse Waiver Project awarded to the Illinois Department of Children and Family Services, Division of Service Intervention.

Sam Gillespie

AOD Administrator
DCFS Service Intervention Division
Chicago, IL

Mr. Gillespie is the Alcohol and Other Drug Administrator for the Illinois Department of Children and Family Services (DCFS) in the Service Intervention Division. He has worked for DCFS since 1998. Prior to that, he held numerous administrative, programmatic and research positions with the Illinois Department of Alcoholism and Substance Abuse, since its inception in 1984.

Elliott Graham, Ph.D.

Director
James Bell Associates
Arlington, VA

Dr. Graham has over 12 years of experience in program evaluation and social science research, with a special focus on the evaluation of child welfare and early childhood education programs. Dr. Graham's other areas of professional expertise include the evaluation of community-based child maltreatment and substance abuse prevention services; program theory and logic model development; and technology applications in evaluation, including State Automated Child Welfare Information Systems and geographic information systems.

Beth Green, Ph.D.

Vice President and Senior Research Associate
Northwest Professional Consortium Research
Portland, OR

Dr. Green is currently the Vice President of NPC Research. She has been involved in evaluating programs for children and families for more than 15 years. Dr. Green serves as the Co-Principal Investigator for the National Evaluation of Family Treatment Drug Courts. She received her Ph.D. in Social Psychology from Arizona State University in 1993.

Amy Groessl, L.C.S.W.

Therapy Coordinator
Children's Research Triangle
Chicago, IL

Ms. Groessl is the Therapy Coordinator at Children's Research Triangle. She supervises the therapy team and student interns as well as providing therapeutic treatment to children, adolescents and their families. She has advanced training and special interest in the areas of sexual abuse and trauma, prenatal substance exposure, attachment issues and complicated grief and loss.

Robin H. Gurwitch, Ph.D.

Professor
Department of Pediatrics
University of Oklahoma Health Science Center
Oklahoma City, OK

Dr. Gurwitch, a Clinical Professor in the Department of Pediatrics at the University of Oklahoma Health Sciences Center, is a Licensed Clinical Child Psychologist and Marriage and Family Therapist with extensive experience in the implementation and training of professionals in Parent-Child Interaction Therapy (PCIT). Dr. Gurwitch and colleagues are currently investigating the use of PCIT in decreasing or preventing behavioral challenges and parenting stress.

Donna Hamburg, M.A.

Child Welfare Administrator
Denver Department of Human Services
Denver, CO

Ms. Hamburg has worked in the child welfare field for 28 years. She was previously employed in a model treatment program for residential detoxification services and support programs. As the Child Welfare Administrator for the Denver Department of Human Services, Ms. Hamburg currently oversees substance abuse services for Denver county clientele, and is especially interested in treatment outcomes and cross-training for clinicians and caseworkers.

Pamela Hammond

Family Services Manager
Squaxin Island Health and Human Services
Shelton, WA

Ms. Hammond oversees the Indian Child Welfare program and has extensive tribal administrative experience in the areas of executive management, human resources, social services and education for various Tribes in the Northwestern States. She has worked as a facilitator for the Hoopa Valley Tribe in Hoopa, California. Ms. Hammond has a B.A in Liberal Arts from Evergreen State College as well as an A.A. degree from Olympic College in Bremerton, WA. She is currently working on her Master's Degree in Public Health at Evergreen State College.

Nancy Hansen, M.S.W.

Arizona Families F.I.R.S.T. Program Coordinator
Arizona Department of Economic Security
Division of Children, Youth and Families
Phoenix, AZ

Ms. Hansen is a Human Services Program Development Specialist for the Arizona Department of Economic Security, Division of Children, Youth and Families. In her current position, she has been responsible for the creation, implementation, and administration of the Arizona Families F.I.R.S.T. program in addition to initiating and participating in innovative strategies to improve outcomes for children and families involved in the Arizona child welfare system

Karen E. Hanson, L.C.S.W.

Assistant Clinical Professor in Social Work
Clinical Coordinator – Coordinated Intervention
for Women and Infants
Child Study Center, Yale University School of Medicine
New Haven, CT

Ms. Hanson is an Assistant Clinical Professor in Social Work and Clinical Coordinator of the Coordinated Intervention for Women and Infants at the Yale Child Study Center in New Haven, Connecticut. Her work includes program administration, clinical supervision, home-based individual and family psychotherapy and program development.

Carol J. Harper, M.P.A.

Project Director
American Humane Association
Englewood, CO

Ms. Harper has 17 years experience working with child welfare and human services professionals nationally and internationally to implement child welfare programs and to conduct evaluation research focusing on child abuse prevention and protection. She has directed and served as lead field manager on numerous program implementation, program evaluation and staff development and training efforts.

Kim Helfgott, M.A.

Senior Program Manager
Child Welfare Information Gateway
Fairfax, VA

Ms. Helfgott has extensive experience coordinating national initiatives to enhance services and service delivery for children, youth and families. Under contract from the Children's Bureau Clearinghouse Services, she currently serves as Senior Program Manager for Special Initiatives for the Child Welfare Information Gateway. She is responsible for facilitating strategic planning based on trends and needs analysis, exploring opportunities for partners to support mutual goals and identifying new products and services to facilitate knowledge management which meet the changing information needs in the child welfare field.

Kathryn Icenhower, Ph.D., L.C.S.W.

Executive Director
SHIELDS for Families
Los Angeles, CA

Dr. Icenhower, SHIELDS for Families Executive Director, has worked in the social services field for over 25 years in both clinical and administrative positions. She developed and implemented all of SHIELDS programs and incorporated SHIELDS for Families into a private, non-profit organization. Under Dr. Icenhower's guidance, SHIELDS programs have been nationally recognized and used as models by Federal, State and local entities, including the Center for Substance Abuse Treatment and the Department of Housing and Urban Development.

Nadja Jones, M.S.W.

Community Development Specialist
The National Indian Child Welfare Association
Portland, OR

Ms. Jones is a Community Development Specialist for the National Indian Child Welfare Association (NICWA) and an in-depth Technical Consultant for the Squaxin Island Tribe. She is the technical assistance provider for tribal systems collaboration and trainer of NICWA curricula. Ms. Jones conducts trainings on topics such as cross cultural skills for the non-Indian; cultural competence for human service settings; positive Indian parenting; tribal child welfare and methamphetamines; grassroots child abuse prevention; and engaging substance-abusing families.

Julie A. Kable, Ph.D.

Assistant Director
Fetal Alcohol Center
Marcus Institute
Assistant Professor
Department of Pediatrics
Emory University School of Medicine
Atlanta, GA

Dr. Kable is the Assistant Director of the Fetal Alcohol Center at the Marcus Institute, an affiliate of Kennedy Krieger Institute in Atlanta, Georgia. She is also an Assistant Professor in the Department of Pediatrics at Emory University School of Medicine. One of Dr. Kable's many research interests includes investigations into the developmental impact of prenatal exposure to alcohol, tobacco and cocaine.



Glenda Kaufman Kantor, Ph.D.

Sociologist, Research Associate Professor, Co-Director
Family Research Laboratory
University of New Hampshire
Durham, NH

Dr. Kaufman Kantor is a sociologist and research associate professor at the Family Research Laboratory and the Center for Research on Crimes Against Children at the University of New Hampshire, where she also serves as co-director of the Family Research Laboratory National Institute on Mental Health Family Violence Post-Doctoral Research Training Fellowships. Her major interests are related to assessment and prevention of maladaptive risk behaviors, the etiology and prevention of intimate violence, the linkages between substance abuse and family violence and child neglect.

Tanya Krupat, M.P.H., L.M.S.W.

Senior Family Program Associate
Children of Alcoholics Foundation
Phoenix House
New York, NY

Ms. Krupat is an independent consultant providing training and technical assistance on the dynamics and impact of family separation due to involvement in the child welfare and criminal justice systems as well as substance abuse. Ms. Krupat served as the co-director of the family visiting unit for the division of family permanency at the Administration for Children's Services in New York City. Prior to that, she was the founder and director of the Children of Incarcerated Parents Program housed within New York City's child welfare agency. Ms. Krupat focused on cross-systems collaborations to ensure the maintenance of family ties to safeguard children's well-being for the past ten years.

Elizabeth Laugeson, Ph.D.

Psychologist and Postdoctoral Research Fellow
Semel Institute, David Geffen School of Medicine
University of California at Los Angeles
Los Angeles, CA

Dr. Laugeson is a Psychologist and Postdoctoral Research Fellow at the UCLA Neuropsychiatric Institute in Los Angeles, California. She currently serves as Clinical Supervisor for a Centers for Disease Control and Prevention grant and works in multiple capacities for three National Institutes of Health research projects.

John A. Lippitt, Ph.D.

Identification and Treatment of Infants and Families
Project Director
MA Department of Public Health
Boston, MA

Dr. Lippitt is an educator and researcher who has played an instrumental role in the development of Massachusetts projects, bringing together systems that identify young children at risk. He serves as senior research associate at Heller School, Brandeis University responsible for managing the implementation of the Massachusetts Early Childhood Linkage Initiative. As an independent consultant, Dr. Lippitt also lends his expertise in the areas of survey design, data collection and analysis, program evaluation, policy change and service system planning.

Christina Little, Ph.D.

Research Director
Kempe Children's Center
Denver, CO

Dr. Little has an extensive background in parent-child relationships, infant mental health and development and child welfare research. Dr. Little is a faculty member at the University of Colorado School of Medicine; research director for the infant program at the Kempe Children's Center; and a Graduate Zero to Three Fellow.

David D. Love, M.F.T.

Executive Director
Valley Community Counseling Services
Stockton, CA

Mr. Love is a Marriage and Family Therapist and Executive Director of Valley Community Counseling Services. He has been providing therapy to families impacted by substance abuse, domestic violence and child abuse for over 30 years. Mr. Love is an international trainer and has presented in Japan, China and Australia as well as throughout Europe.

Linda Lynch

Executive Director
Rhode Island Family Court
Project Director
Family Treatment Drug Court
Rhode Island Family Court
Providence, RI

Ms. Lynch's primary focus is on developing, implementing and sustaining specialty Courts. As project director for the Family Treatment Drug Court, she manages, oversees and ensures compliance with grant requirements related to substance abuse treatment and other services for parents of drug-exposed children.

**Patrick Mangan, M.S.W.**

Program Manager
Birth and Beyond, Department of Health and
Human Services
Sacramento County
Sacramento, CA

Mr. Mangan currently serves as program manager for Birth and Beyond at the Department of Health and Human Services located in Sacramento County, California. Birth and Beyond is an innovative program providing family support services in eight diverse communities. Mr. Mangan has over 27 years of experience in both children's residential programs and community-based family support programs.

Michele McGibbon

Project Manager
LPC Consulting Associates, Inc.
Sacramento, CA

Ms. McGibbon has been part of the Birth and Beyond evaluation team with LPC Consulting Associates, Inc. since 2001. She has 12 years of experience in research and data analysis, including experience in the fields of program evaluation, marketing and social research.

Rich McGourty, Ph.D.

Organizational Psychologist
Children's Research Triangle, National Training Institute
Chicago, IL

Dr. McGourty is a consulting psychologist at Children's Research Triangle. Dr. McGourty's consulting work embraces a range of activities including organizational change efforts, strategic planning, management development, and coaching executives and managers. He is a member of the American Psychological Association, The Illinois Psychological Association, and the Society of Industrial and Organizational Psychologists.

Lisa Merkel-Holguin, M.S.W.

Director
National Center on Family Group Decision Making
American Humane Association
Englewood, CO

Ms. Merkel-Holguin is the Director of Practice and System Improvements in Child Welfare at the American Humane Association, and has been the Director of AHA's National Center on Family Group Decision Making since 1998. She has provided training, technical assistance and consultation to over 200 U.S. communities, and has presented and keynoted on FGDM to over 100 national and international audiences.

Pamela Miller

Collaborative Justice Coordinator
Superior Court of California, County of Riverside
Murrieta, CA

Ms. Miller is currently the Program Director for the Pre filing Family Preservation Court under the SAMHSA Family Drug Court grant. This project provides intensive treatment and services to parents in danger of losing their children due to substance abuse/neglect. She works closely with county, state and federal agencies. She is currently helping to develop a community outreach campaign to educate the public and provide them with opportunities to help families in their communities.

Honorable James R. Milliken, J.D.

Judge of the Superior Court, Retired
San Diego, CA

Judge Milliken was appointed to the Superior Court in San Diego County in 1988, after an 18-year career as an attorney. He became Presiding Judge of the Juvenile Court in 1996, a position he held for eight years. During that time, drug treatment and case management programs were instituted for parents of children in the Abuse and Neglect System. These programs shortened stays in foster care and increased family reunification rates substantially.

Kathleen Tavenner Mitchell, M.H.S., L.C.A.D.C.

Vice President and National Spokesperson
National Organization on Fetal Alcohol Syndrome
Olney, MD

Ms. Mitchell is vice president and national spokesperson for the National Organization on Fetal Alcohol Syndrome (NOFAS) and a noted international speaker on Fetal Alcohol Spectrum Disorders (FASD). Ms. Mitchell is a Licensed Clinical Alcohol and Drug Counselor and holds a Master of Human Services degree. She has 22 years of experience as an educator, clinician and lecturer in the addictions and FASD field. She was appointed to the U.S. National Task Force on Fetal Alcohol Syndrome/Fetal Alcohol Effects by the Secretary of Health and Human Services. Her FASD advocacy work includes numerous testimonies to the U.S. House of Representatives.

Deborah Moses, M.P.H.

Operations Manager
Minnesota Department of Human Services
Chemical Health Division
Saint Paul, MN

Ms. Moses began her career in the substance abuse field in 1983. She served as the director of Eden Women's Program, a comprehensive program for pregnant women and women with children. She also served as the director of health and social service for PICA Head Start located in Hennepin County. Ms. Moses holds a M.A. in Public Health and a Chemical Dependency Competence Certificate. She is currently the operations manager in the Chemical Health Division at the Minnesota Department of Human Services.

Randy Muck, M.Ed.

Lead Public Health Advisor
 Practice Improvement Branch
 Division of Services Improvement
 Center for Substance Abuse Treatment
 Substance Abuse and Mental Health Services
 Administration
 Department of Health and Human Services
 Rockville, MD

Mr. Muck is the lead public health advisor and team leader for adolescent treatment programs at the Center for Substance Abuse Treatment, Substance Abuse and Mental Health Services Administration, U.S. Department of Health and Human Services. He is responsible for the development, implementation and evaluation of national programs for the treatment of adolescent substance use disorders. His publications on substance abuse treatment systems and adolescent treatment have appeared in peer reviewed journals and books.

Rob Nagby

Court Commissioner
 Superior Court of California
 County of Riverside
 Murrieta, CA

Mr. Nagby currently serves as court commissioner with the Riverside Superior Court and began his appointment in 1998. He is assigned to the Juvenile Division hearing matters involving abused, neglected and abandoned children. Mr. Nagby also serves on the faculty of the California Judicial Education and Research, which provides continuing education to judges.

Wendy Neuberger, M.D.

Pediatrician
 Children's Research Triangle
 Chicago, IL

Dr. Neuberger is a Board-Certified Pediatrician who conducts medical evaluations as part of full medical-psychological assessments at Children's Research Triangle. Dr. Neuberger received her medical degree and served a pediatric residency at Emory University School of Medicine in Atlanta, Georgia.

Mary J. O'Connor, Ph.D.

Department of Psychiatry and Biobehavioral Sciences
 Semel Institute, David Geffen School of Medicine
 University of California at Los Angeles
 Los Angeles, CA

Dr. O'Connor is an adjunct professor in the Department of Psychiatry at the David Geffen School of Medicine at UCLA. She holds a diplomate in clinical child and adolescent psychology from the American Board of Professional Psychology (ABPP). She is training director for the Lanterman UCLA training grant to train clinical psychology interns and post doctoral fellows in developmental disabilities. Dr. O'Connor has had over twenty years of experience working in the area of developmental disabilities. She completed her Ph.D. in Developmental Psychology at the University of California at Los Angeles in 1977.

Blair Paley, Ph.D.

Associate Clinical Professor
 David Geffen School of Medicine
 University of California at Los Angeles
 Los Angeles, CA

Dr. Paley is an associate clinical professor in the Department of Psychiatry at the David Geffen School of Medicine at UCLA and co-director of the UCLA Fetal Alcohol Spectrum Disorders (FASD) Clinic. Her research focuses on predictors and correlates of stress in parents of children with FASDs, and the relationship between parent stress and child functioning in this population.

Viki Pendleton, Psy.D.

Child and Family Therapist
 Children's Research Triangle
 Chicago, IL

Dr. Pendleton is a Child and Family Therapist for the Therapy Team at Children's Research Triangle. She provides treatment and consultation to children and their families who have prenatal alcohol and drug exposure as well as histories of abuse and neglect.

Cheryl Pratt, Ph.D.

Coordinator 0-3 Psychology
 Clinical Institute Coordinator
 Children's Research Triangle
 Chicago, IL

Dr. Pratt is a pediatric clinical nurse specialist, a child development specialist, an infant mental health specialist and a developmental psychologist. She is the coordinator of the 0-3 Team and the Clinical Training Institutes at Children's Research Triangle. Dr. Pratt has presented on a range of infant mental health issues as well as teaching developmental and social-emotional screening and assessment tools.

**Bruce Duncan Perry, M.D., Ph.D.**

Senior Fellow
The ChildTrauma Academy
Houston, TX

Dr. Perry is the senior fellow of *The ChildTrauma Academy*, a not-for-profit organization based in Houston that promotes innovations in service, research and education in child maltreatment and childhood trauma. His work on neuroscience and clinical research has been instrumental in describing how childhood experiences, including neglect and traumatic stress, change the biology of the brain – and, thereby, the health of the child. Over the last 15 years, Dr. Perry has been an active teacher, clinician and researcher in children’s mental health and the neurosciences, holding a variety of academic positions.

Amy Price, M.P.A.

Associate Director
National Abandoned Infants Assistance Resource Center
Berkeley, CA

Ms. Price is associate director of the National Abandoned Infants Assistance Resource Center at the University of California, Berkeley, where she has worked on policy and practice issues related to perinatal substance abuse, child welfare, and HIV since 1993. She also evaluates a local shared family care program; conducted a national study of policies and practices related to substance exposed newborns; and served as an advisory consultant to California’s child welfare services redesign efforts.

Joanna D. Reynolds, M.A.

Research Associate
American Humane Association
Englewood, CO

Ms. Reynolds has been a research associate for American Humane Association since February 2005. She is responsible for conducting project evaluation and impact assessments, developing surveys, performing data management and analysis and writing reports.

Jessica Rieken

Clinical Research Associate
Children’s Hospital and Regional Medical Center
Seattle, WA

Ms. Rieken is a clinical research associate at Children’s Hospital and Regional Medical Center in Seattle, Washington. She is a recent graduate of the University of Washington in Seattle with a Bachelors of Science degree in Psychology, with Honors. Jessica’s honor’s thesis focused on the effects of thought suppression on subsequent alcohol use. These findings were presented at multiple conferences, including the Northwest Cognition and Memory Conference in Vancouver, BC. Jessica has been involved with investigation of children with Attention Deficit Hyperactivity Disorder and conduct disorder and research examining the effects of alcohol on eyewitness memory. Currently Ms. Rieken is the research coordinator for a CDC-funded FASD intervention research project. The primary goal of this project is to successfully transition to the community an innovative, specialized, home-based behavioral consultation intervention for foster, adoptive, and birth families raising children with FASD and behavior problems.

Michael L. Riley, Ph.D.

Director
Children and Family Services
Orange County Social Services Agency
Santa Ana, CA

Dr. Riley is the director of the Children and Family Services, which is a division of Orange County’s Social Services Agency. In this role, he oversees the county’s child protective services, foster home care and group home care, as well as emergency shelter care for neglected and abused children. He has worked with troubled children and families in crisis at Father Flanagan’s Girls’ and Boys’ Home in Boys Town, Nebraska, and was Director at Boys Town of Southern California. Dr. Riley received a Commendation by Governor Gray Davis’s “Child Welfare Services Redesign Stakeholders Group” in 2003 and was recognized as “Outstanding Teacher of the Year” by the Nebraska Council of Children with Behavior Disorders in 1978.



Cambria Rose, L.C.S.W.

Project Coordinator
 California Evidence-Based Clearinghouse
 Chadwick Center for Children and Families
 Rady Children's Hospital and Health Center
 San Diego, CA

Ms. Rose is the project coordinator for the California Evidence-Based Clearinghouse for Child Welfare. She has an extensive history working with families involved with the child welfare system. For the past five years, Ms. Rose has worked as a Mental Health Therapist at Chadwick Center for Children and Families with children who have been affected by trauma, and their families. Ms. Rose is currently involved in the breakthrough series collaborative focused on implementing trauma focused cognitive behavioral therapy at Chadwick Center.

Pat Sandau-Beckler, Ph.D.

Professor
 New Mexico State University
 Las Cruces, NM

Dr. Sandau-Beckler is a professor in the School of Social Work at New Mexico State University. She teaches family centered practice in multicultural settings. Dr. Sandau-Beckler has numerous publications and co-authored a book on family centered practice. She has provided national and State leadership in home-based services.

Kathy Sanders-Phillips, Ph.D.

Distinguished Research Scientist
 Center for Drug Abuse Research
 Howard University
 Washington, D.C.

Dr. Sanders-Phillips is the Historically Black Colleges and Universities Distinguished Research Scientist at the College of Medicine at Howard University. She is the director of the Research Program in the Epidemiology and Prevention of Drug Abuse, and executive director of the D.C.-Baltimore Research Center on Child Health Disparities; professor in the Department of Pediatrics and Child Health at the Howard University College of Medicine; professor of pediatrics at the George Washington University College of Medicine and Health Sciences; and clinical associate professor in the UC Berkeley School of Public Health in California. She is an expert in the field of children's exposure to community violence and the relationship between exposure to community violence and risky behaviors

Christine Schmidt, Psy.D.

Clinical Psychologist
 Children's Research Triangle
 Chicago, IL

Dr. Schmidt is the child and adolescent psychology services coordinator and the director for the psychology training program at Children's Research Triangle (CRT). Dr. Schmidt provides psychological assessment and treatment for children, adolescents and families. She has specific interest and experience in the area of prenatal substance exposure, childhood trauma and maltreatment.

Linda Schwartz, Ph.D.

Clinical Child Psychology/Clinical Director
 Children's Research Triangle
 Chicago, IL

Dr. Schwartz earned her doctorate in Clinical Child and Family Psychology from DePaul University and has 19 years of experience in the psychological assessment and treatment of children, with a specific focus on underserved populations and those within the foster care system. Dr. Schwartz is the clinical director at Children's Research Triangle and conducts developmental and psychological evaluations with children ages 0-3.

Linda K. Sibley

Director
 Confident Kids Support Groups
 Family Resources International Inc.
 Santa Maria, CA

Ms. Sibley is co-author of Celebrating Families!, and author and founder of Confident Kids Support Groups, an international organization promoting Christian support groups for children ages 4-12 years and their parents. She has conducted support groups for children and parents for the past 20 years. Ms. Sibley travels extensively, training leaders to provide support group programs in their own communities.

Margo B. Singer, M.P.A.

Addiction Program Specialist 2
 New York State Office of Alcoholism and Substance Abuse Services
 Albany, NY

Ms. Singer works at the New York State Office of Alcoholism and Substance Abuse Services where she serves as project director for a Federal initiative to prevent Fetal Alcohol Syndrome Disorders (FASD) in New York. She also co-chairs the statewide FASD Task Force. Ms. Singer earned her M.P.A. from Columbia University and her B.A. from Barnard College.



Tim S. Smith

Criminal Justice Division Manager
Mental Health Systems, Inc.
San Diego, CA

Mr. Smith was the program coordinator at the San Bernardino Drug Court from 1994 to 1999. It was one of the first seven mentor drug court sites. As of July 1999, Mr. Smith was promoted to criminal justice division manager for Mental Health Systems, Inc. and currently provides administrative oversight and training for seventeen drug Courts. Mr. Smith also provides administrative oversight for a county probation program, nine Federal probation programs and two DUI programs.

Rosemary Soave, M.S.W.

Clinical Program Coordinator
Women and Infants Hospital Vulnerable Infants Program
Providence, RI 02903

Ms. Soave is the coordinator of the Vulnerable Infants Program of Rhode Island at Women and Infants Hospital in Providence, Rhode Island. She serves as supervisor of the family treatment drug court team of care coordinators and has worked for over 15 years with at-risk children and families, both as a direct service provider and as an administrator.

Sue Spooner, R.N., C.P.N.P.

Maternal Child and Adolescent Health Director
Riverside County Department of Public Health
Riverside, CA

Ms. Spooner is the Maternal Child and Adolescent Health director for Riverside County, California. She has worked in public health for the past 17 years. She is a pediatric nurse practitioner, and for the past three years has been working to implement the perinatal substance abuse program in Riverside County.

Sally Tapia

SHIELDS for Families
Los Angeles, CA

Sally Tapia is a graduate of the Exodus program. She is in her second year of college, receiving an AA in human services, and preparing to transfer to a Bachelor's degree in Social Work program next fall. She is currently a drug diversion program case manager with clients in the criminal justice system. Her seven children are all honor students.

Erin Telford, Psy.D.

Clinical Psychologist
Children's Research Triangle
Chicago, IL

Dr. Telford provides assessment, treatment and consultation to children and families with a history of prenatal substance exposure, trauma and developmental delays at Children's Research Triangle. In the course of conducting assessment and treatment, Dr. Telford works closely with families and schools to develop individualized education plans and provide training and education regarding each student's individualized learning, behavioral and emotional needs.

Oneta Templeton McMann, L.C.S.W.

Program Coordinator
Children's Mercy Hospitals and Clinics
Social Work and Community Services Department
Kansas City, MO

Ms. Templeton McMann is program coordinator for the Team for Infants Endangered by Substance abuse (TIES) program of Children's Mercy Hospital in Kansas City, Missouri. She has over 25 years experience in medical and community social work, and over 20 years as a social work manager. She has been program coordinator since the inception of the TIES Program in the early 90s, and she also oversees a Healthy Start subcontract to provide home-based, health promotion services.

Katharine Thomas

Assistant Director
Institute for Health and Recovery
Cambridge, MA 02139

Ms. Thomas is a child development specialist who has worked for 12 years in the field of women's substance abuse treatment developing programs that meet families' needs and making service linkages at both the local and State policy levels. For 5 years, Ms. Thomas was the policy director for the Massachusetts Part C (Early Intervention) system, which annually serves over 30,000 infants and toddlers with developmental delays.

Sara Tienda, M.S.W.

Assistant Director
SHIELDS for Families
Los Angeles, CA

Ms. Tienda is the assistant director of SHIELDS for Families, Inc. She has over 17 years experience in both administrative and direct services. Ms. Tienda has extensive expertise in resource development and the provision of services in South Central Los Angeles.



Rosemary S. Tisch, M.A.

Director
Prevention Partnership International
Family Resources International, Inc.
Saratoga, CA

Ms. Tisch is lead author of *Celebrating Families!* and Director of Prevention Partnership International, which develops programs to break the cycle of addiction in families. She is Founder of Kids Are Special (KAS) and Family Education Foundation (FEF), which focuses on the prevention of substance abuse in high-risk populations. Group models created by KAS and FEF have been successfully replicated throughout the U.S., Mexico and Russia. Ms. Tisch has trained individuals internationally including Russia, Ukraine and Mexico.

Anne M. Wells, Ph.D.

Research Psychologist
Children's Research Triangle
Chicago, IL

Dr. Wells is the Clinical Research Director at Children's Research Triangle (CRT). Dr. Wells manages the data for the Centers for Disease Control and Prevention (CDC) grant, the National Institute on Alcohol Abuse and Alcoholism (NIAAA) grant and the 4Ps Plus contracts. She conducts the statistical analyses of these data. Dr. Wells also consults with CRT staff about research design and methodology on various projects.

Kathryn M. Wells, M.D., F.A.A.P.

Medical Director, Family Crisis Center
Denver Health and Hospital Authority
Assistant Professor of Pediatrics
University of Colorado Health Sciences Center
Denver, CO

Dr. Wells is the medical director of the Denver Family Crisis Center where she serves as the child abuse and neglect consultant for the City and County of Denver. She is also an attending physician at The Children's Hospital and is an assistant professor at the University of Colorado. Dr. Wells received her M.D. from Creighton University School of Medicine in Omaha, Nebraska.

Charles Wilson, M.S.S.W.

Executive Director
Chadwick Center for Children and Families
Rady Children's Hospital and Health Center
San Diego, CA

Mr. Wilson directs the California Evidence-Based Clearinghouse for Child Welfare through a contract with the California Department of Social Services. He is the executive director of the Chadwick Center for Children and Families at Children's Hospital and Health Center, San Diego where he oversees a large multi-service child and family maltreatment organization.

Tim Workman and Lisa Carmel

Parents Taking Action
Santa Ana, CA

After surviving five tumultuous years as a couple in addiction, Tim and Lisa are now enjoying together the experience of parenthood in recovery. They have two young daughters, Lily age 5, and Sadie age 2. Since their dependency case closed three years ago, they have volunteered much of their time to Orange County Social Services Agency, Children and Family Services contributing to the development of programs geared to better assist parents going through reunification. Currently they belong to an organization called Parents Taking Action which consists of other reunified parents and serves as an advisory board to Social Services Agency, Children and Family Services. Lisa is also a Parent Partner with the new Parent Leadership Program of Orange County and works mentoring parents entering the system.

Jay Wurscher

Alcohol and Drug Services Coordinator
State of Oregon Department of Human Services
Salem, OR

Mr. Wurscher is the alcohol and drug services coordinator for Oregon's Department of Human Services Child Welfare Group. He works in the Children, Adults and Families Office and Child Protective Services Division in Salem. Mr. Wurscher is a certified alcohol and drug counselor and has been in the field of addiction treatment and prevention since 1982. His previous experience includes working as an addiction counselor, clinical supervisor, program manager and trainer.

Nancy Young, Ph.D.

Director
Children and Family Futures
Irvine, CA

Dr. Young is the director of Children and Family Futures (CFF), a California-based research and policy institute whose purpose is to improve outcomes for children and families affected by substance use disorders. Dr. Young also serves as the director of the Federally-funded National Center on Substance Abuse and Child Welfare. She has authored many policy analyses and evaluation reports on substance abuse, welfare, and child welfare. She received her M.S.W and Ph.D. from the University of Southern California School of Social Work.



National Collaborative Leadership Award

Kathryn M. Wells, M.D., F.A.A.P.

Dr. Wells is being recognized for her work across multiple service sectors and agencies to incorporate best practices from child welfare, health care, drug treatment and legal systems, and for her dedication to engaging people in the collaborative processes that support improved services to children and families. She was a leader in developing the Colorado System Integration Model for Infants, and was the driving force in establishing a specialized foster care medical clinic to ensure that children entering foster care

are provided continuity of care and a “medical home,” regardless of placement moves or changes in custody. She met the challenge of bringing together multiple systems in the complex issue of children and families affected by substance use disorders. In all venues, whether testifying as an expert witness, training professionals, seeing patients, or participating on the State advisory board regarding drug endangered children, she demonstrates her professionalism and dedication to serving children and families.

Special Recognition for Outstanding Efforts in Collaboration Award

Karen Mooney, L.C.S.W., C.A.C. III

Coordinator of Women’s Treatment
Colorado Department of Human Services
Denver, CO

Ms. Mooney has been a driving force for cross-systems collaboration in Colorado, and is being recognized for her sustained efforts for families. Early in her career, Ms. Mooney asked a child welfare client what she could do to be more helpful. The client replied that she could learn about substance abuse. Ms. Mooney followed this advice to become a certified addiction counselor. She built on this experience to create a program for substance abuse screening and referrals to treatment for clients in the child welfare system, and she created a unique State licensing category for substance abuse treatment programs to be licensed to work with child welfare families.

Peter Panzarella, M.A., M.S., L.A.D.C., L.P.C.

Director of Substance Abuse Services
Department of Children and Families
Hartford, CT

Mr. Panzarella is being recognized for leading the State of Connecticut’s groundbreaking efforts to ensure that families have priority access to a statewide system of substance abuse assessment and treatment services through a program initiated in 1995 known as Project SAFE. His continued efforts have ensured that quality improvement enhancements and a strong recovery orientation are part of on-going Project Safe practices. Mr. Panzarella is also being recognized for the development and implementation of multi-systemic therapy for youth in Connecticut, through a joint effort with the juvenile justice system.

Nominees

These nominees have been honored by their peers in recognition of their efforts in collaboration to improve conditions for children and families across the nation. We extend our sincere congratulations to each nominee

Elizabeth Belk

Wernersville, PA

Richard Brown, M.S.W.

Tampa, FL

Ernest D. Cantley, D.P.A.

Datona Beach, FL

Deborah A. Kwast, J.D.

Santa Ana, CA

Dawn M. McLaughlin, M.A.

Traverse City, MI

Art Martinez, Ph.D

Gardnerville, CA

Robert W. Nagby, J.D.

Moreno Valley, CA

Honorable Lowell D. Castleton, J.D.

Boise, ID

Honorable Jeri Beth Cohen, J.D.

Miami, FL

Danisa Farley

Cottage Grove, MN

Robert Rancourt, J.D.

Center City, MN

Brenda Roche, Ph.D.

Billings, MT

Rosemary Tisch, M.A., M.M.

Saratoga, CA



Exhibitor Information

Exhibits are located in the South Exhibit Hall and will be open during conference hours. Please stop by and visit the exhibits during the conference.

Alternative Behavioral Services (ABS) – Booth 3

240 Corporate Boulevard
Norfolk, VA 23502
Phone: 757-474-3120
Website: www.absfirst.com

FHC Health Systems created Alternative Behavioral Services (ABS) to answer an evolution in the behavioral health care marketplace. ABS provides innovative wrap-around programs in both community-based and residential settings. Specialized programs enable ABS staff to effectively meet the needs of most referrals. Well-trained, highly qualified staff design, operate and deliver effective interventions for the juvenile justice, child welfare, mental health, and educational arenas. ABS is committed to assisting children, adolescents, adults, and their families overcome behavioral health challenges and enjoy more functional successful lives.

American Public Human Services Association (APHSA) – Booth 20

810 First Street, N.E., Suite 500
Washington, DC 20002
Phone: 202-682-0100
Website: www.aphsa.org

APHSA is a non-profit and nonpartisan membership organization of State and local human services agencies and individuals from across the nation and its territories. APHSA educates members of Congress, the media and the broader public on issues concerning children, families and the elderly. They support this work through a range of affiliate organizations including the National Association of Public Child Welfare Administrators. The Leadership and Practice Development Department was created in 1996 to support and enhance the capacity of State and local human service agencies to improve outcomes through effective leadership practices. They offer a variety of training and management consulting services designed to help leaders meet the challenges of leading human service agencies as they implement new policies and affect major program reforms.

California Department of Alcohol and Drug Programs Resource Center – Booth 33

California Department of Alcohol and Drug Programs
1700 K Street, First Floor
Sacramento, California, 95814-4037
Website: www.adp.ca.gov/RC/RC_sub.shtml

The Resource Center at the California Department of Alcohol and Drug Programs maintains a comprehensive collection of alcohol, tobacco, and other drug prevention and treatment information. This information is provided to all California residents at no cost through a Clearinghouse, a full-service Library, Internet communication links, and a telephone information and referral system. These services can be accessed by letter, fax, Internet, e-mail, telephone, or in person during the business hours of 8:00 a.m. to 4:30 p.m., Monday through Friday, excluding state holidays.

California Fetal Alcohol Spectrum Organization (CalFAS) – Booth 25

3920 60th Street, #91
San Diego, CA 92115
Phone: 1-877-FASD411
Website: www.calfas.org

CalFAS's mission is dedicated to two simple goals: to prevent FASD and eliminate it for the children of tomorrow, and to intervene and provide assistance to those who are living with FASD today. Their primary prevention focuses on outreach to birth mothers by creating a network that will support mothers in recovery and assist them in accessing services. Their primary intervention focuses on networking with all existing Federal, State and local service agencies both public and private to coordinate and extend existing service delivery systems to effectively meet the needs of individuals with FASD as well as their care providers.

Child Welfare Information Gateway – Booths 31 and 32

Children's Bureau/Administration on Children,
Youth and Families
1250 Maryland Avenue, SW Eighth Floor
Washington, DC 20024
Phone: 800-394-3366 or 703-385-7565
Website: www.childwelfare.gov

Child Welfare Information Gateway promotes the safety, permanency and well-being of children and families by connecting child welfare, adoption and related professionals as well as concerned citizens to timely, essential information. A service of the Children's Bureau, Administration for Children and Families, U.S. Department of Health and Human Services, Child Welfare Information Gateway provides access to print and electronic publications, websites and online databases covering a wide range of topics from prevention to permanency, including child welfare, child abuse and neglect, adoption, search and reunion and much more.

Child Welfare League of America (CWLA) – Booth 21

440 First Street, NW, Third Floor
 Washington DC 20001-2085
 Phone: 202-638-2952
 Website: www.cwla.org

CWLA is the nation's oldest and largest membership-based child welfare organization. CWLA is committed to engaging people everywhere in promoting the well-being of children, youth and their families, and protecting every child from harm. They envision a future in which families, neighborhoods, communities, organizations and governments ensure that all children and youth are provided with the resources they need to grow into healthy, contributing members of society. CWLA has more than 900 member agencies that serve children, youth and families across the country each year. Agencies look to CWLA for widely used and recognized practice standards; cutting-edge publications; expert training and technical assistance; authoritative data; and research and legislative advocacy.

Children and Family Futures (CFF) – Booths 22 and 23

4940 Irvine Blvd., Suite 202
 Irvine, CA 92620
 Phone: 714-505-3525
 Website: www.cffutures.org

The mission of Children and Family Futures is to improve the lives of children and families, particularly those affected by substance use disorders. CFF consults with government agencies and service providers to ensure that effective services are provided to families. CFF advises Federal, State, and local government and community-based agencies, conducts research on the best ways to prevent and address the problem, and provides comprehensive and innovative solutions to policy makers and practitioners. CFF is a California-based not-for-profit organization.

Commission on Accreditation of Rehabilitation Facilities (CARF) – Booth 24

4891 E. Grant Road
 Tucson, AZ 85712
 Phone: 520-325-1044
 Website: www.carf.org

Founded in 1996, CARF International is an independent, non-profit accreditor of human service providers in the areas of rehabilitation, employment, child and family, community and aging services. The CARF family of organizations currently accredits more than 4,900 providers at more than 17,000 locations in the United States, Canada, Western Europe and South America. More than 6.3 million persons of all ages are served annually by CARF-accredited providers.

Council on Accreditation (COA) – Booth 4

120 Wall Street, 11th floor
 New York, NY 10005
 Phone: 212-797-3000
 Website: www.coanet.org

COA is an international, independent, not-for-profit, child and family service and behavioral healthcare accrediting organization. It was founded in 1977 by the Child Welfare League of America and Family Service America, formerly the Alliance for Children and Families. Originally known as an accrediting body for family and children's agencies, COA currently accredits 38 different service areas and over 60 types of programs. Among the service areas are substance abuse treatment, adult day care, services for the homeless, foster care and intercountry adoption. The COA community is deeply committed to promoting standards, championing quality and advocating for accreditation to serve vulnerable populations, including children, individuals, seniors and families.

Drug Enforcement Administration (DEA) – Booth 40

Office of Diversion Control
 2401 Jefferson Davis Highway
 Alexandria, VA 22301
 Phone: 800-882-9539
 Website: www.dea.gov

DEA's mission is to enforce the controlled substances laws and regulations of the United States and bring to the criminal and civil justice system of the United States, or any other competent jurisdiction, those organizations and principal members of organizations, involved in the growing, manufacture or distribution of controlled substances appearing in or destined for illicit traffic in the United States. The DEA recommends and supports non-enforcement programs aimed at reducing the availability of illicit controlled substances on the domestic and international markets.

Hazelden Publishing and Educational Services – Booths 37 and 38

PO Box 176
 Center City, MN 55012-0176
 Phone: 800-328-9000
 Website: www.hazelden.org

Hazelden, founded in 1949, is a non-profit organization that pioneered the model of care for alcoholism, drug addiction and related diseases that is now the most widely used in the world. Hazelden Publishing and Educational Services provides trusted resources to help education professionals, treatment providers, individuals, families and communities prevent and recover from alcoholism, drug addiction and other related disorders. Thousands of people from all 50 states and 42 foreign countries have turned to Hazelden to find expertise, quality care and leading authorities on addiction and recovery issues.



National Abandoned Infants Assistance Resource Center (AIA) – Booth 2

University of California, Berkeley
1950 Addison Street, Suite 104 #7402
Berkeley, CA 94720-7402
Phone: 510-643-8390
Website: <http://aia.berkeley.edu>

The National Abandoned Infants Assistance Resource Center's mission is to enhance the quality of social and health services delivered to children who are abandoned or at-risk of abandonment due to the presence of drugs and/or HIV in the family. The Resource Center provides training, information, support and resources to service providers who assist these children and their families. The Center's materials address topics such as women with co-occurring mental illness and substance abuse; effects of prenatal substance exposure on infant and early childhood outcomes; policies and practices for identifying, reporting and responding to newborns who are substance-exposed; the effect of methamphetamine and OxyContin on pregnant and parenting women and their infants; and other important issues affecting women with substance use disorders, their children and families.

National Association of Social Workers, California Chapter (NASWCA) – Booth 34

315 West 9th Street, Suite 321
Los Angeles, CA 90015
Phone: 213-452-0090
Website: www.naswca.org/

National Association of Social Workers, California, is the local chapter of the largest membership organization of professional social workers in the world. NASW California promotes the quality, effectiveness and the image of the social work profession to improve the well being of all residents of California. NASW works to enhance the professional growth and development of its members by creating and maintaining professional standards, and advancing sound social policies.

National Association of State Alcohol and Drug Abuse Directors, Inc. (NASADAD) – Booth 18

808 17th Street NW, Suite 410
Washington, DC 20006
Phone: 202-293-0090
Website: www.nasadad.org

NASADAD is a private, not-for-profit educational, scientific and informational organization. The Association was originally incorporated in 1971 to serve State Drug Agency Directors, and then in 1978 the membership was expanded to include State Alcoholism Agency Directors. NASADAD's purpose is to foster and support the development of effective alcohol and other drug abuse prevention and treatment programs throughout every State. NASADAD serves as a focal point for the examination of alcohol and other drug related issues of common interest to both other national organizations and Federal agencies.

National Council of Juvenile and Family Court Judges (NCJFCJ) – Booth 19

P.O. Box 8970
Reno, NV 89507
Phone: 775-784-6012
Website: www.ncjfcj.org

NCJFCJ pursues a mission to improve courts and systems practice and to raise awareness of the core issues that touch the lives of many of our nation's children and families. A leader in continuing education opportunities, research and policy development in the field of juvenile and family justice, the NCJFCJ is unique in providing practice-based resources to jurisdictions and communities nationwide. The NCJFCJ seeks to improve the standards, practices and effectiveness of the nation's juvenile and family courts while acknowledging and upholding victim's rights, the safety of all family members and the safety of the community.

National Indian Child Welfare Association (NICWA) – Booth 17

5100 SW Macadam Avenue, Suite 300
Portland, OR 97239
Phone: 503-222-4044
Website: www.nicwa.org

NICWA is the most comprehensive source of information on American Indian child welfare and works on behalf of Indian children and families. NICWA provides public policy, research and advocacy; information and training on Indian child welfare; and community development services to a broad national audience including tribal governments and programs, State child welfare agencies and other organizations, agencies and professionals interested in the field of Indian child welfare.

National Resource Center for Child Protective Services – Booth 6

925 #4 Sixth Street NW
Albuquerque, New Mexico 87102
Phone: (505) 345-2444
Website: www.nrccps.org

The National Resource Center for Child Protective Services (NRCCPS) is funded by the Department of Health and Human Services, Administration for Children and Families Children's Bureau and operated by ACTION for Child Protection, Inc. NRCCPS provides expert consultation, technical assistance and training in the area of child protective services (CPS). The NRCCPS helps to build the capacity of State, local, Tribal and other publicly administered or supported child welfare agencies to achieve safety, permanency, and well-being for children and families. The specific focus of the National Resource Center for Child Protective Services is to develop and integrate policies and practices that improve the prevention, reporting, assessment and treatment of child abuse and neglect.



National Training Institute Upstream (NTI) – Booth 36

180 N. Michigan Avenue, Suite 700
Chicago, IL 60601
Phone: 312-726-4011
Website: www.ntiupstream.com

The National Training Institute (NTI) specializes in translating information and knowledge developed through research and clinical care into educational programs and materials for professionals and the public. NTI produces books, pamphlets, brochures, videos, software and other informative materials for both professionals and non-professionals. NTI specializes in the development of electronic performance systems, curricula development, and training materials. NTI also provides training for community leaders, parents, physicians, and psychologists – for anyone who works with children.

Phoenix House Orange County – Booth 26

1207 E. Fruit Street
Santa Ana, CA 92701
Phone: 714-953-9373
Website: www.phoenixhouse.org

For almost 40 years, Phoenix House has been putting men, women, teens and families on the road to recovery. We treat some 6,000 persons each day at our residential and outpatient drug and alcohol treatment programs. We currently operate some 100 programs in nine states.

Prevention Partnership International (PPI) – Booth 39

2422 Divide Way
Santa Maria, CA 93458
Phone: 805-614-2824
Website: www.preventionpartnership.us

PPI develops programs providing resources for children, families and communities to break the cycle of addiction. PPI is a division of Family Resources International (FRI), a 501(c)(3) non-profit agency. FRI's mission is to provide resources for local and international communities to facilitate the use of healthy living skills by individuals, thereby strengthening families and communities. FRI's other division is Family Ministries International (FMI) which develops and operates nondenominational church based ministries to strengthen family and personal relationships. FMI offers two curriculums: Confident Kids (for families experiencing stress) and Kids Like Me (for children of alcoholics/addicts).

Professional Tutors of America, Inc. (PTA) – Booth 1

3350 E. Birch Street, Suite 108
Brea CA 92821
Phone: 800-832-2487
Website: www.professionaltutors.com

PTA is a privately owned corporation which offers tutoring services at all levels. Since its incorporation in 1983, PTA has attracted many highly talented and motivated instructors from the education and business communities. PTA tutors are carefully screened and selected to meet specific requirements.

Realityworks, Inc. – Booth 26

2709 Mondovi Rd.
Eau Claire, WI 54701
Phone: 888-830-1416
Website: www.realityworks.com

Realityworks provides products and services to improve and enhance social, emotional and physical health through the use of interactive technology. They seek to improve the human condition around the globe by enabling educators to show the probable outcomes of behaviors and choices. Realityworks focuses its efforts on the life skills market and features products in three key areas: parenting education, substance abuse education and consumer education. With these products and other innovative ideas on the horizon, Realityworks continues to be a leader in bringing real experiences to life skills education.

San Diego State University Center for Behavioral Teratology (CBT) – Booth 32

6363 Alvarado Court, Suite 209
San Diego, CA 92120
Phone: 619-594-1228

The Center for Behavioral Teratology at San Diego State University is a federally-funded research lab that offers free neuropsychological and developmental testing for children between the ages of 6 months and 18 years old. We are interested in normally developing children, children with ADHD, and children with prenatal drug or alcohol exposure, from biological, foster, or adoptive families. Children receive their choice of a toy or money for their participation, and parents receive a confidential multi-page summary of each child's test results. This summary report can be shared with physicians, teachers, or other professionals at the parent's request.



Substance Abuse and Mental Health Services Administration (SAMHSA) – Booths 27 and 28

1 Choke Cherry Road
Rockville, MD 20857
Phone: 240-276-2130
Website: www.samhsa.gov

SAMHSA is an agency of the U.S. Department of Health and Human Services (DHHS). With an annual budget of approximately 3.2 billion, SAMHSA's Centers and Offices administer and fund a rich portfolio of grant programs and contracts that support States' efforts to expand and enhance prevention programs and to improve the quality, availability and range of substance abuse treatment and mental health services in local communities where people can be served more effectively. Through its three Centers (Center for Mental Health Services, Center for Substance Abuse Prevention and Center for Substance Abuse Treatment) and supporting Offices, SAMHSA engages in program activities to carry out its mission: to build resilience and facilitate recovery for people with, or at risk for substance use and mental health disorders.

Tarzana Treatment Centers – Booth 31

18646 Oxnard Street
Tarzana, CA 91356
Phone: 818-996-1051
Website: www.tarzanatc.org

Tarzana Treatment Centers, Inc. is a full-service behavioral healthcare organization that provides high quality, cost-effective substance abuse and mental health treatment to adults and youths. Tarzana is a non-profit, community-based organization that operates a psychiatric hospital, residential and outpatient treatment centers and family medical clinics. All facilities are licensed and certified by the State of California and the County of Los Angeles and are accredited by the Joint Commission on Accreditation of Healthcare Organizations (JCAHO). Tarzana has provided a comprehensive continuum of healthcare services since 1972.

Youth Villages – Booth 7

3320 Brother Boulevard
Memphis, TN 38133
Phone: 901-251-4811
Website: www.youthvillages.org

Youth Villages serves more than 11,000 troubled children and their families each year in Alabama, Arkansas, Mississippi, North Carolina, Tennessee, Texas and the District of Columbia. Youth Villages provides in-home and residential interventions that help youth improve academic achievement, make a successful transition to employment and avoid involvement with the juvenile justice system. Youth Villages utilizes multi-system therapy, a scientifically validated program designed to teach young people how to function successfully in school, at home and with peers.

Continuing Education

Continuing Education Units

- Continuing education credit is co-sponsored by Children and Family Futures and the Institute for Continuing Education.
- The cost for CEUs is \$30. You can pay for CEUs at the conference by credit card, check, or cash. Visit the Continuing Education Desk at the conference and pick up a packet.
- Credit is awarded for individual sessions. You must sign in and out at the designated locations, attend the entire session, and comply with other continuing education requirements.
- If you have questions about continuing education, presenters, or for a listing of learning objectives by session, please contact The Institute at 251-990-5030; (FAX) 251-990-2665.
- For the professions listed below, **16.5 CEUs** are available for the conference and **7.5 CEUs** for the pre-conference symposium.

Psychology: The Institute for Continuing Education is approved by the American Psychological Association (APA) to offer continuing education for psychologists. The Institute maintains responsibility for this program and its content.

Counseling: The Institute for Continuing Education is an NBCC approved provider of continuing education and a co-sponsor of this event. The Institute for Continuing Education may award NBCC approved clock/contract hours for programs that meet NBCC requirements. The Institute maintains responsibility for this program and its content.

Social Work: The Institute for Continuing Education is approved as a provider for social work continuing education by the Association of Social Work Boards (ASWB), through the Approved Continuing Education (ACE) program. The Institute maintains responsibility for the program. ASWB Provider No. 1007. Licensed social workers should contact their individual state jurisdiction to review current continuing education requirements for license renewal. California Board of Behavioral Sciences Provider No. PCE 636; Ohio Counselor/Social Work Board Provider RCS 030001; Florida Department of Health Provider No. BAP 255; Texas Board of Social Work Examiners Provider CS 1416; Illinois Dept. Professional Regulation License No. 159-000606; Alabama Board of SW Examiners: Approved Provider.

Marriage-Family Therapy: The Institute for Continuing Education is recognized as a provider of continuing education by the California Board of Behavioral Sciences, Provider PCE 636.

Drug-Alcohol: The Institute for Continuing Education is approved by the National Association of Alcohol and Drug Abuse Counselors (NAADAC) to provide continuing education for alcohol and drug abuse counselors. NAADAC Provider No. 00243.

Nursing: The Institute for Continuing Education is an approved provider of continuing education in nursing by the Alabama State Nurses Association, an accredited approver by the ANCC Commission on Accreditation. The Institute for Continuing Education is an approved provider in nursing by the California Board of Nursing Provider CEP 12646.

Continuing Legal Education

- *The conference will offer **11 CLEs** through the State Bar of California for Putting the Pieces Together for Children and Families.*
- The cost for CLEs is \$30. You may pay at the conference by credit card, check, or cash. Visit the Continuing Education Desk at the conference and pick up a packet.
- No CLEs are available for the pre-conference symposium.

Continuing Medical Education

- *Maximum of **23.75 AMA PRA Category 1 Credits TM** available for Behavior and the Brain, and Putting the Pieces Together for Children and Families.*
- The cost for CMEs is \$60. You may pay at the conference by credit card, check, or cash. Visit the Continuing Education Desk at the conference and pick up a packet
- Continuing Medical Education Accreditation Statements: Loma Linda University School of Medicine is accredited by the Accreditation Council for Continuing Medical Education (ACCME) to provide continuing medical education for physicians. Loma Linda University School of Medicine designates this continuing medical education activity for a maximum of 23.75 *AMA PRA Category 1 Credits TM*. Physicians should only claim credit commensurate with the extent of their participation in the activity.
- Disclosure: This program has been planned and implemented in accordance with ACCME essentials and standards. The Loma Linda University School of Medicine Office of Continuing Medical Education relies on its CME faculty to provide program content that is evidenced-based and free of commercial bias. Therefore, in accordance with ACCME standards, any faculty and/or provider industry relationships will be disclosed and resolved.
- Objectives (CMEs): At the completion of this conference, participants will be able to:
 1. Describe the child who has been affected by prenatal exposure to alcohol or other drugs.
 2. Name five psychosocial factors that impede optimal parenting in pregnant and parenting women who use alcohol and other drugs.
 3. Describe the interaction of biological and environmental factors that affect long term outcome of children in the child welfare system who have been prenatally exposed to alcohol and other drugs.
 4. Identify three intervention points across the prenatal, postnatal, and child life span that can provide opportunities for prevention and early intervention.
 5. Analyze the policy implications that link child welfare and substance abuse systems of care.
 6. List five policies across the child welfare/substance abuse systems interface that would promote optimal child and family outcomes.

Children and Family Futures – Improving Lives, Building Systems

What We Do

Policy Analysis and Legislative Testimony
Program Evaluation and Data Implications
Grant Writing
Technical Assistance and Strategic Planning
Training and Curricula Development

Our Products

Collaborative Assessment Tools
Models for Linkages among Treatment Agencies, Child Welfare Agencies, and the Courts
On-line Resources for Child Welfare, Treatment and Court Staff
Compilations of Screening and Assessment Tools



CFF Staff (from left) Charles Williams, Susan Kapsner, Danielle Nava, Jerri Hodge, Lani Daly, Jane Piasecki, Cathleen Otero, Sharon Boles, Kris Ferguson, Cindy Stewart, Deborah Werner, Nancy Young, Kim Dennis, Sid Gardner, Kay Stanton, and Kim's daughter Olive in front. Not pictured: Curtis Carter, Kari Earle, Laila Karamally, and Terry Robinson



CFF Receives Prestigious Award

Children and Family Futures received the Administration for Children and Families 2006 Outstanding Contractor Award in recognition of its work on behalf of children and families.

For more information,
visit us on the web at
www.cffutures.org

Contact Us

By mail:
Children and Family Futures
4940 Irvine Boulevard
Suite 202
Irvine, CA 92620

By phone: 714.505.3525
By fax: 714.505.3626

By email:
contactus@cffutures.org

Contextual Accreditation™

It's about you and the people you serve.

“It's easy to believe we do quality work. In today's world, it is an imperative that we verify that belief. Those we serve and those who support us deserve no less. That is why Children's Aid and Family Services remains committed to the COA Accreditation process.”

*-Robert B. Jones, Ph.D.
President/Chief Executive Officer
Children's Aid and Family Services, Inc.
Paramus, NJ*

“Evidence-informed”

*- William Meezan, Dean and Professor,
College of Social Work, Ohio State University,
Columbus, OH*

“Field-driven”

*- Sister Ann Patrick Conrad, Associate Professor,
Catholic University School of Social Service,
Washington, DC*

“Transformational”

*- Viola P. Miller, Commissioner, Tennessee Department
of Children's Services, Nashville, TN; Former Secretary
of the Kentucky Cabinet for Families and Children*

“Outcomes-oriented”

*- Jorge Alberto Acosta, Executive Director,
Nuevo Amanecer Latino Children's Services,
Los Angeles, CA*

“FACILITATIVE”

*- Gayle S. Shank, Managing Director, Research and Quality
Assurance, Catholic Charities, Archdiocese of St. Louis,
St. Louis, MO*



To learn more about **Contextual Accreditation™** please visit us
at www.coanet.org/CA or contact Zoë Hutchinson at
866.262.8088, ext. 242.



Child Welfare Information Gateway

PROTECTING CHILDREN ■ STRENGTHENING FAMILIES

A free service of the Children's Bureau

Stay connected to information and resources you need.

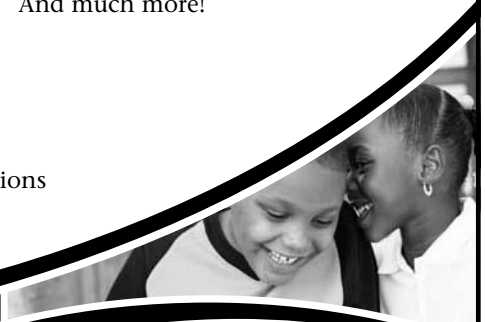
From child abuse prevention to foster care and adoption, Child Welfare Information Gateway connects you to:

- Statistics
 - Research
 - Training Resources
 - Programs
 - Laws
 - Evidence-Based Practices
- And much more!

How to stay connected:

- Sign up for FREE subscriptions
- Access our library online
- Call our trained customer services staff for help in answering your questions

Visit our website at www.childwelfare.gov, or call toll-free at 800.394.3366.



U.S. Department of Health and Human Services
Administration for Children and Families
Administration on Children, Youth and Families
Children's Bureau



You Focus on Children. We Focus on You.



NASW's CHILD WELFARE AND CHILDREN, ADOLESCENTS, & YOUNG ADULTS (CAYA) Specialty Practice Sections (SPS)

are an essential resource for social workers who work with children. Both Sections provide you with key information, award-winning resources, and CE opportunities to help you promote healthy children and youth development.

Members-Only Benefits and Services

- FREE CE teleconferences
- FREE CEs through *InterSections in Practice*, the online annual bulletin
- Practice-specific newsletters two times a year
- *eConnection*, an annual electronic newsletter dedicated to practice-related topics
- *Section Link*, practice-related NASW news six times per year
- Web site with message board and searchable library

Join CHILD WELFARE and CAYA Today!*

For more information and to join online, visit www.socialworkers.org/sections

* You must be a current NASW member to join a Specialty Practice Section.



National Association of Social Workers
Specialty Practice Sections

www.socialworkers.org/sections



Shape your future
Reshape the world

Among the top 10 master of social work programs in the nation, USC prepares you for taking on a rapidly changing world. We'll supply you with the tools you need most - starting with an innovative curriculum, highlighted by a new leadership course, more electives to choose from and an individualized study plan to map your goals.

Our faculty will inspire you and involve you. Plus, our Los Angeles location will give you the chance to witness your impact on one of the most diverse urban communities in the world. (Not to mention more internship and employment options than you can count!) And, as a Trojan, you'll never be far away from family, a global support network 180,000 strong.

At USC, we help you realize your full potential so you'll be able to help others realize theirs.



USC | School of Social Work
www.usc.edu/socialwork



Free Accredited Online Courses

Understanding Child Welfare and the Dependency Court

Learn how child welfare and dependency court requirements affect parents in treatment. This course includes:

- Basics of the child welfare and dependency court systems
- Strategies for collaborating with child welfare and the courts
- The treatment provider's role in identifying and reporting child abuse and neglect
- Extensive resources, including child welfare websites, online publications, references and bibliography, and extensive confidentiality information

Approved by the National Association of Alcoholism and Drug Abuse Counselors for four Continuing Education Units.

There is no fee for CEUs.

Understanding Substance Use Disorders, Treatment and Recovery

Learn about the impact of substance use disorders on parents, children, and families. This course includes:

- How parents' substance use disorders contribute to child abuse and neglect
- Steps to take when you identify substance abuse as a factor in cases of child abuse and neglect
- How you can support families with substance use disorders
- Strategies that motivate families to engage in treatment
- How to collaborate with substance abuse treatment professionals to meet the needs of families

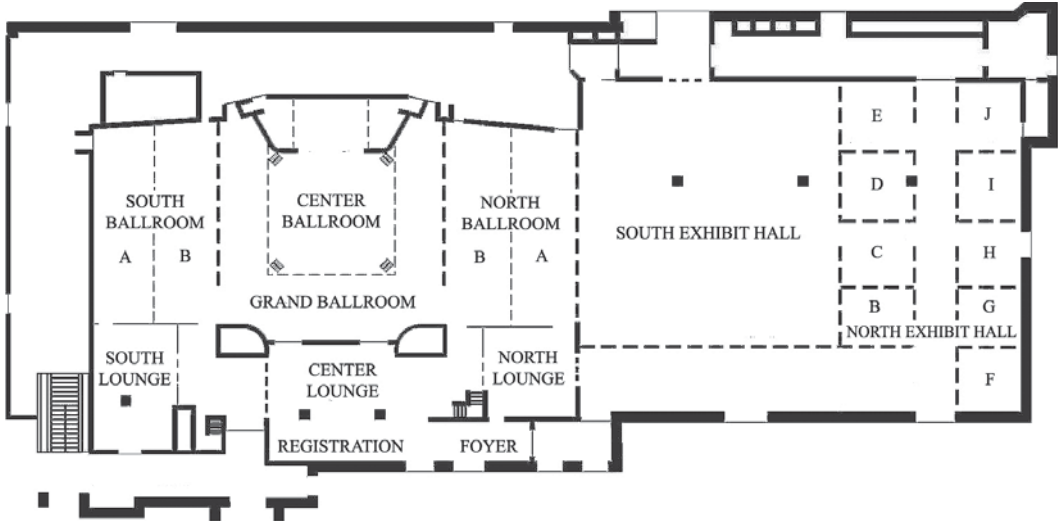
Approved by the National Association of Social Workers for four Continuing Education Units.

There is no fee for CEUs.

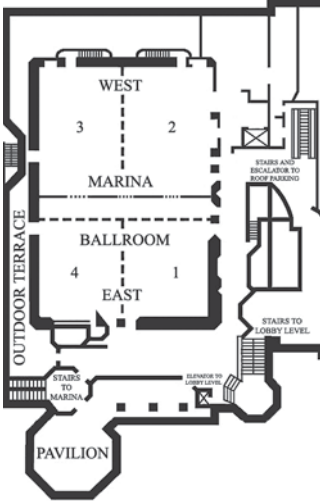
We encourage State and local administrators to disseminate information about this free training to your staff and providers.

Hotel Map

Grand Ballroom



Upper Level
Marina Ballrooms



Lower Level
Meeting Rooms

